

FLORENCE-1R-ZT25

Asymmetric beam for wall-washing

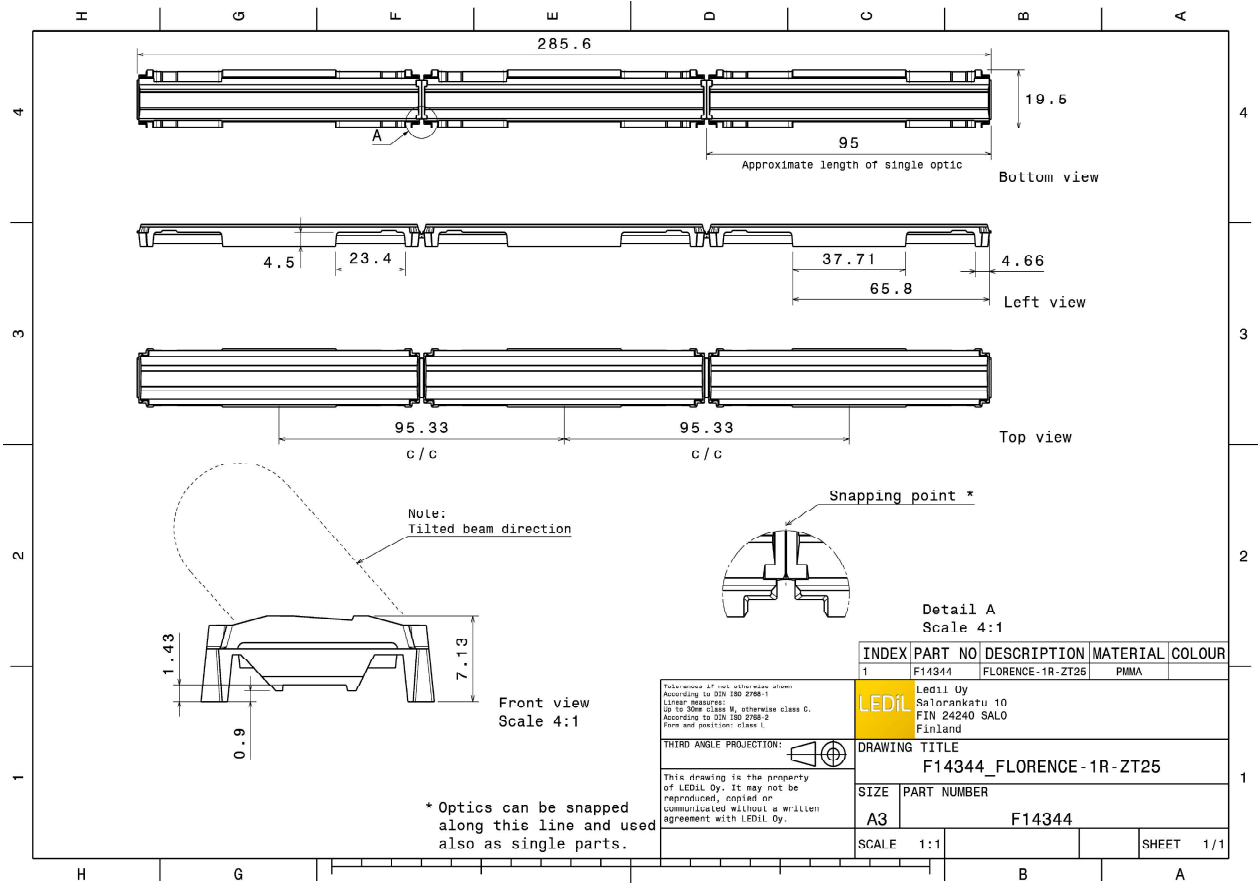
TECHNICAL SPECIFICATIONS:

Dimensions	19.5 x 286.0 mm
Height	7.1 mm
Fastening	glue
Colour	clear
Box size	398 x 298 x 265 mm
Box weight	6.8 kg
Quantity in Box	165 pcs
ROHS compliant	yes ⓘ



MATERIAL SPECIFICATIONS:

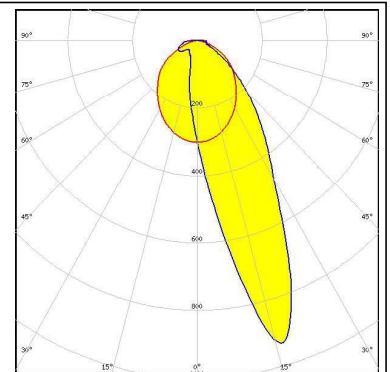
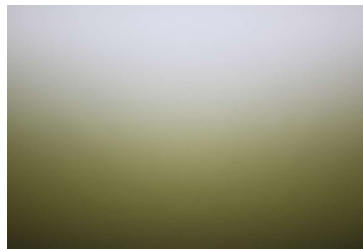
Component	Type	Material	Colour
FLORENCE-1R-ZT25	Linear lens	PMMA	clear



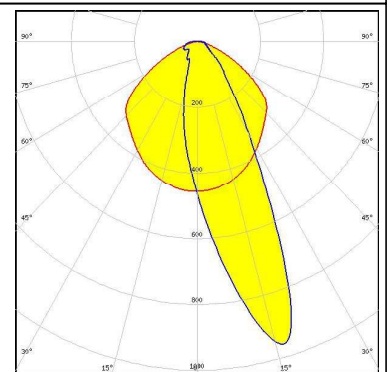
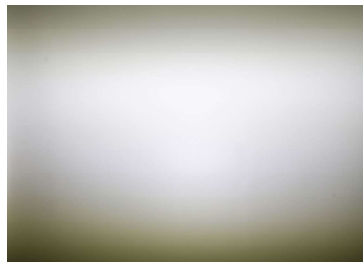
PHOTOMETRIC DATA (MEASURED):



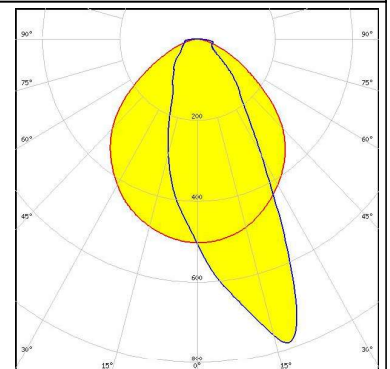
LED CALGD0414-M8W1
 FWHM Asymmetric
 Efficiency 94 %
 Peak intensity 0.940 cd/lm
 LEDs/each optic 1
 Light colour White
 Required components:



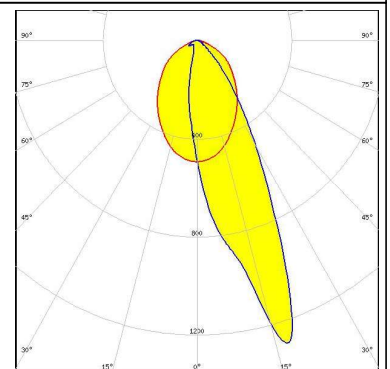
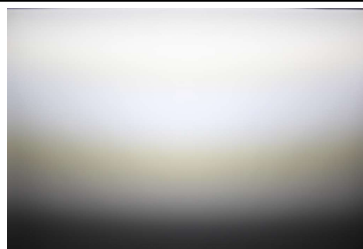
LED CALGD0814-M17W1
 FWHM Asymmetric
 Efficiency 92 %
 Peak intensity 0.960 cd/lm
 LEDs/each optic 1
 Light colour White
 Required components:



LED L0-280024-xxx-C0800-L267
 FWHM Asymmetric
 Efficiency 93 %
 Peak intensity 0.790 cd/lm
 LEDs/each optic 1
 Light colour White
 Required components:



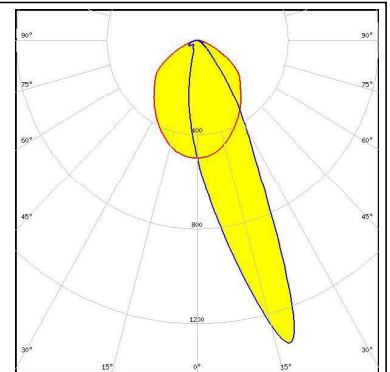
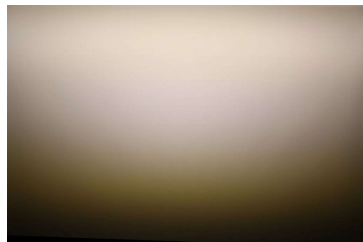
LED LUXEON 3014
 FWHM Asymmetric
 Efficiency 94 %
 Peak intensity 1.300 cd/lm
 LEDs/each optic 1
 Light colour White
 Required components:



PHOTOMETRIC DATA (MEASURED):

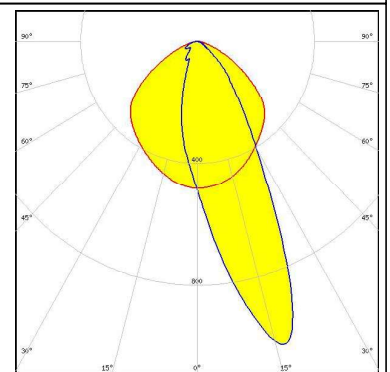
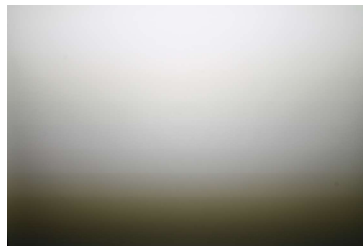
LUMILEDS

LED LUXEON 3020
 FWHM Asymmetric
 Efficiency 94 %
 Peak intensity 1.350 cd/lm
 LEDs/each optic 1
 Light colour White
 Required components:



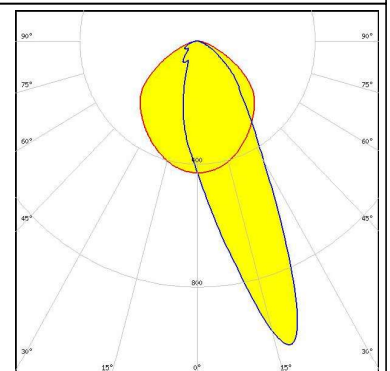
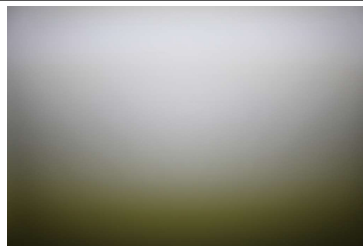
LUMILEDS

LED LUXEON 3030 2D (Round LES)
 FWHM Asymmetric
 Efficiency 93 %
 Peak intensity 1.000 cd/lm
 LEDs/each optic 1
 Light colour White
 Required components:



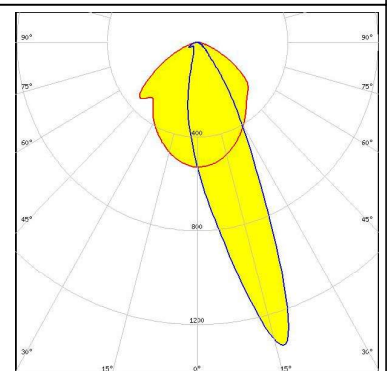
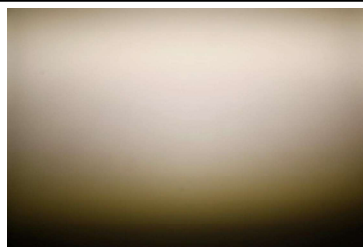
LUMILEDS

LED LUXEON 3535L
 FWHM Asymmetric
 Efficiency 94 %
 Peak intensity 1.040 cd/lm
 LEDs/each optic 1
 Light colour White
 Required components:


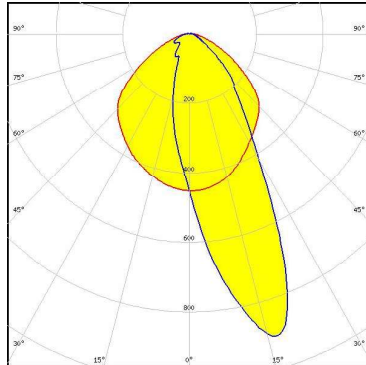
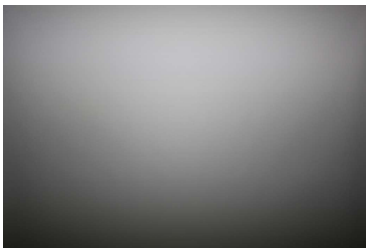
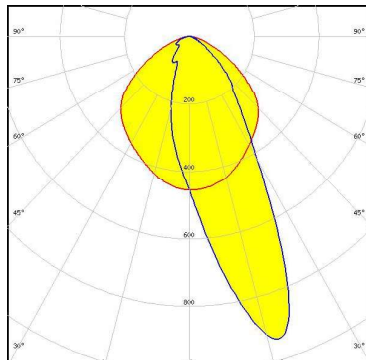

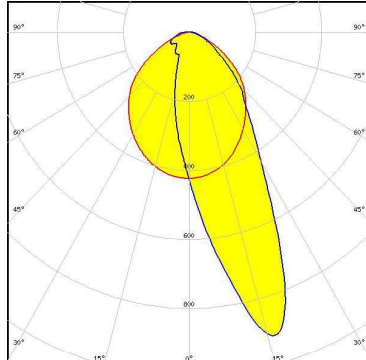


LUMINUS

LED MP-2016
 FWHM Asymmetric
 Efficiency 94 %
 Peak intensity 1.300 cd/lm
 LEDs/each optic 1
 Light colour White
 Required components:



PHOTOMETRIC DATA (MEASURED):

<p>NICHIA</p> <p>LED NF2x757D FWHM Asymmetric Efficiency 93 % Peak intensity 0.910 cd/lm LEDs/each optic 1 Light colour White Required components:</p>		
<p>NICHIA</p> <p>LED NF2x757G FWHM Asymmetric Efficiency 92 % Peak intensity 0.940 cd/lm LEDs/each optic 1 Light colour White Required components:</p>		
<p>NICHIA</p> <p>LED NFSW757H FWHM Asymmetric Efficiency 94 % Peak intensity 0.916 cd/lm LEDs/each optic 1 Light colour White Required components: C14353_FLORENCE-1R-CLIP-A</p>		
<p>OSRAM <small>Opto Semiconductors</small></p> <p>LED Duris S5 (2 chip) FWHM Asymmetric Efficiency 93 % Peak intensity 0.920 cd/lm LEDs/each optic 1 Light colour White Required components:</p>	