

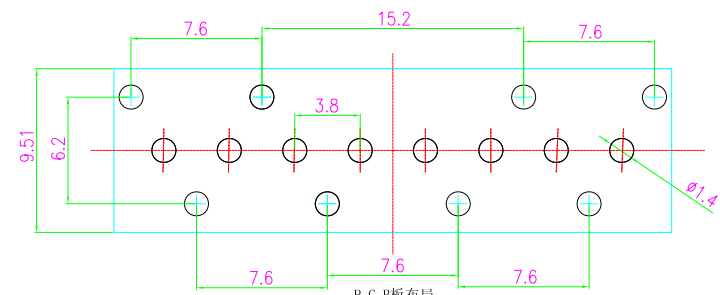
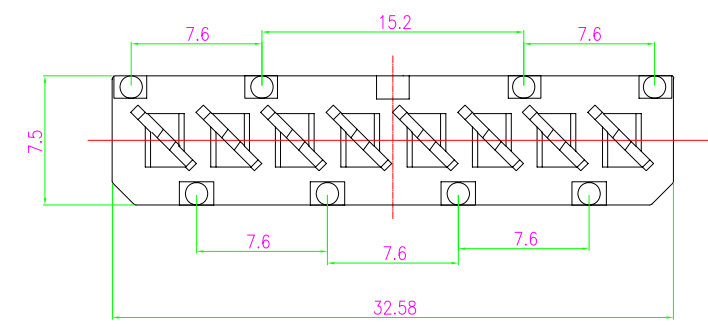
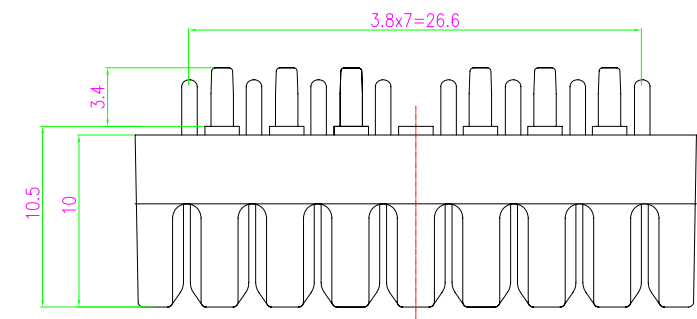
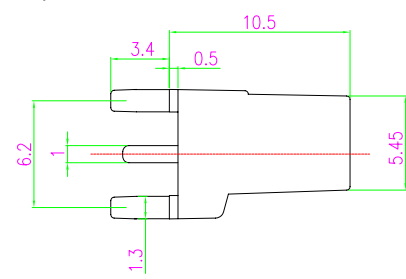
Specifications

Electrical Performance:

- 1. Rated Voltage: 125V AC RMS.
- 2. Rated Current: 1.5 AMP.
- 3. Contact Resistance: 30mΩ Max.
- 4. Insulation Resistance: 500MΩ Min. @500V DC
- 5. Withstand Voltage: 1000V (AC 50Hz RMS) per Minute

Environment Test:

- 1. Operating Temperature: -40°C - +85°C
- 2. Operating Humidity: 90~95% (40±2°C)



P. C. B板布局
公差 ±0.05

Mechanical Performance:

- 1. Base Material: PC
- 2. Terminal Material: Phosphor Bronze T=0.50mm
- 3. Plating: Tin Plating
- 4. Test Life: ≥ 750 cycles
- 5. PCB Weld Retention: Mix. 1LB

Conntherm

INTENDED USED PART NAME:	DRAWING BY
INTENDED USED PART NO.:	CHECKED BY
DRAWING NO: IDC-8P8C	APPROVED BY
SCALE NONE	REV. B

UNLESS OTHERWISE SPECIFIED TOLERANCES ARE
X. ±0.3
.X ±0.2
.XX ±0.15
ANG. ±1°
UNIT mm

NO.	REV.	NEW RELEASE	XSH	20120710
		REVISIONS	CHK.	DATE