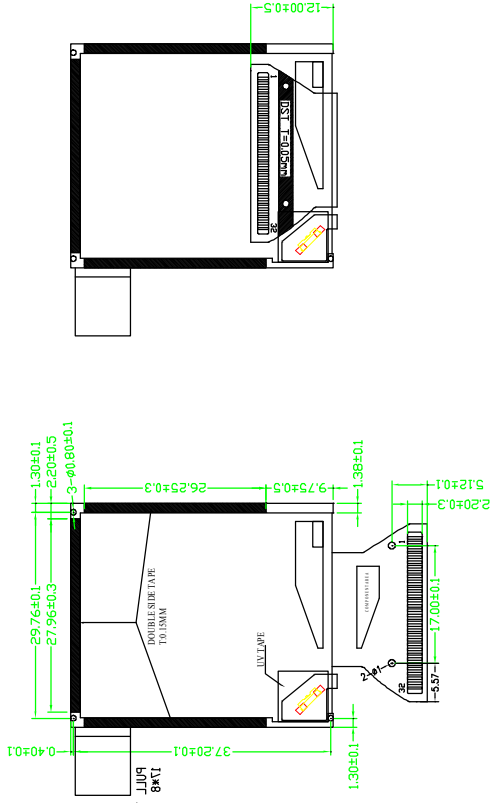
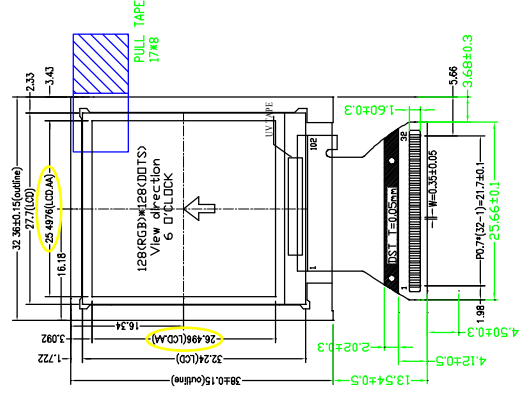
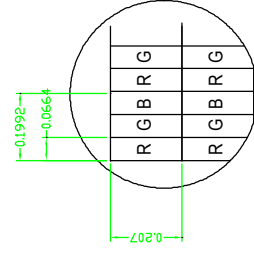


VERTION	DESCRIPTION	DATE
A	First issue	2014-08-16

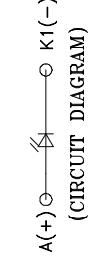


DESCRIPTION	
1	GND5
2	NC
3	GND
4	AV/DD
5	VPP
6	IDVCC
7	GND
8	WR/RS
9	DB0/SDA
10	IM2
11	DB2
12	DB4
13	DB6
14	CS
15	RESET
16	DB7
17	DB5
18	DB3
19	DB1
20	GND
21	RS/SCL
22	RD
23	VCC
24	SPIW4
25	GND
26	IDVCC
27	GND
28	IDVCC
29	GND
30	LEDA
31	LEDK
32	NC

IM2	SPIW4	Interface
1	0	MCU 8-bit Parallel
0	0	3-Line SPI
0	1	4-Line SPI



- NOTES:
1. DISPLAY TYPE:
 2. MODULE SIZE: 1.45INCH
 3. OPERATING TEMPERATURE: -20°C~70°C
 4. STORAGE TEMPERATURE: -30°C~80°C
 5. DRIVER IC: ILI9163V
 6. VIEWING DIRECTION: 6:00
 7. BACKLIGHT: 1LEDS/PARALLEL
 8. ROHS COMPLIANT
 9. Unspecified tolerance is ±0.20mm



CUSTOMER APPROVE	FORMIKE ELECTRONIC CO.,LTD. 深圳市科万宏电子有限公司 www.wandisplay.com	
	MODULE NO.	KWH014ST02-F01
	MATERIAL NO.	VERSION: A
	ISSUED	CHECKED
LEO	ZENG	LIU
	APPROVED	MM
		SHEET: 1 OF 1
		DATE: Aug-16-2014