

**CUSTOMER DRAWING**

REV.	DESCRIPTION	DATE	DRAWN	CHECK	APPROVE
H	ECN93093	11/22/04'	Jenny	Ren	Peter
I	ECN93181	12/17/04'	Jenny	Ren	Peter

**ORDERING INFORMATION**

**AS01 032 A1 TX 2**  
 ① ② ③ ④ ⑤

① **PRODUCT SERIES**

SMT PLCC SOCKET  
 4.5mm STANDARD PROFILE

② **NUMBER OF CONTACTS**

20,28,32,44,52,68,84

③ **NUMBER OF CONTACTS**

A1: BROWN  
 A2: BLACK

④ **CONTACT PLATING**

TO: TIN / LEAD PLATED  
 TF: LEAD FREE BRIGHT PLATED (UNDER 90 PPM)  
 TF1: LEAD FREE MATTE PLATED (UNDER 90 PPM)

⑤ **PACKING METHOD**

2: TUBE  
 3: TAPE/REEL

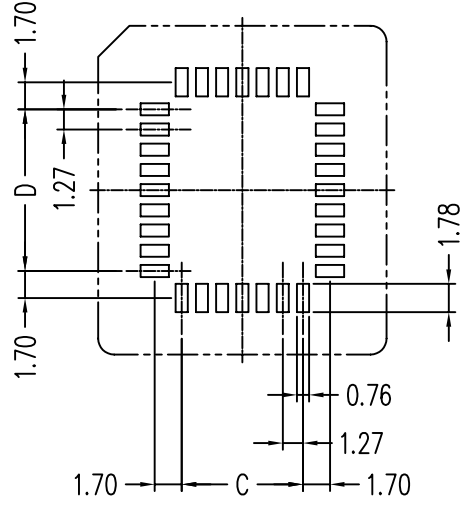
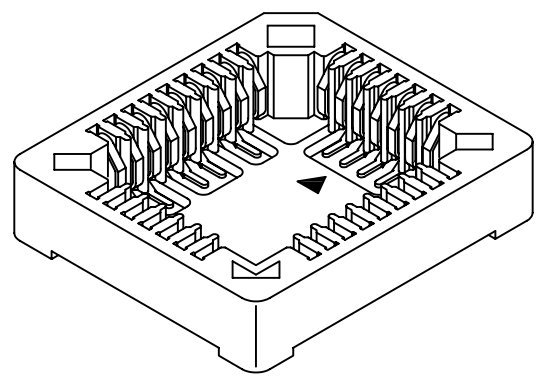
**PERFORMANCE CHARACTERISTICS**

Operating Voltage: 250VAC Max.  
 Current Rating: 1 Amp Max.  
 Contact Resistance: 20 mΩ Max.  
 Insulation Resistance: 1000 MΩ Min.  
 Dielectric Withstanding Voltage: 600 VAC RMS. for 1 minute.  
 Operating Temperature: -40°C TO +85°C

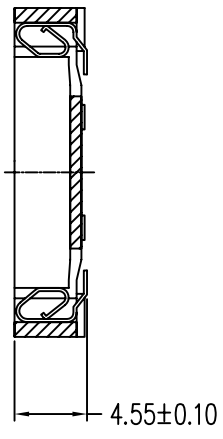
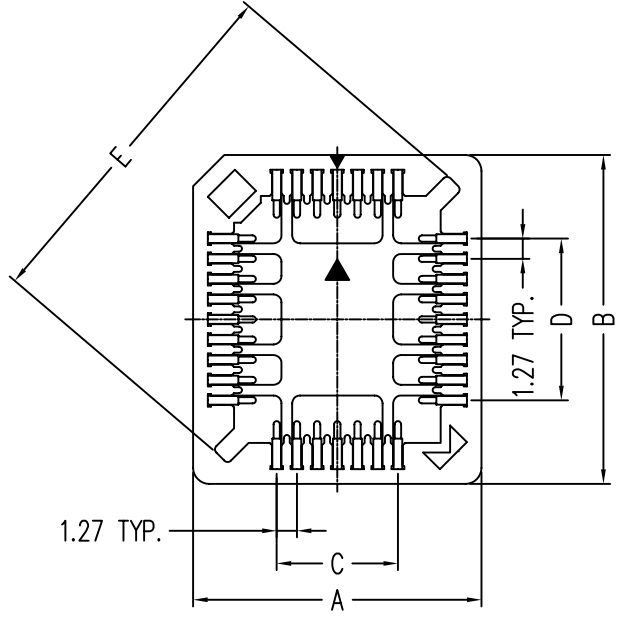
**MATERIAL**

Insulator: PPS; UL 94V-0 Rated.  
 Insulator color: See Ordering Information  
 Terminal: Phosphor Bronze  
 Plating: See Ordering Information

**INFORMATION ONLY**



RECOMMENDED PCB LAYOUT



DIM. TABLE

NO. OF CONTACT	A ±0.20	B ±0.20	C ±0.20	D ±0.20	E ±0.20
20P	15.24	15.24	5.08	5.08	16.70
28P	17.78	17.78	7.62	7.62	20.30
32P	17.78	20.32	7.62	10.16	22.50
44P	22.86	22.86	12.70	12.70	27.50
52P	25.40	25.40	15.24	15.24	31.10
68P	30.82	30.82	20.32	20.32	38.30
84P	35.90	35.90	25.40	25.40	45.50

UNITS: MM	TOLERANCE (UNLESS SPECIFIED)
	0.0 ±0.35
	0.00 ±0.20
	0.000 ±0.XX



TITLE: SMT PLCC (WITHOUT POST) ASS'Y

DWG NO. AS01_C	SERIES AS	SHEET 1/1
FILE PATH AS01\AS01_CI		REV. I