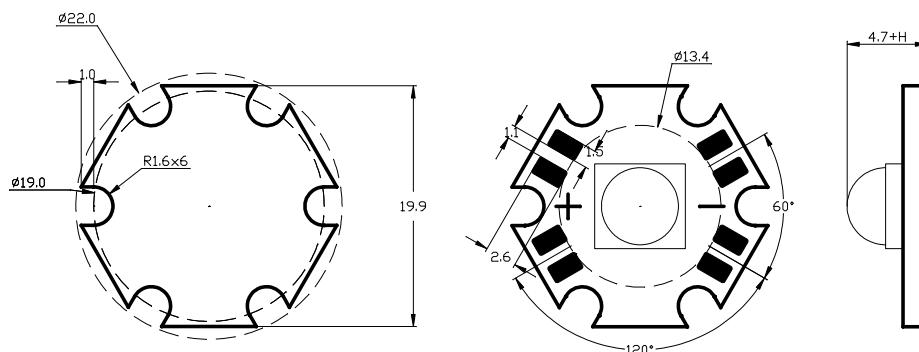




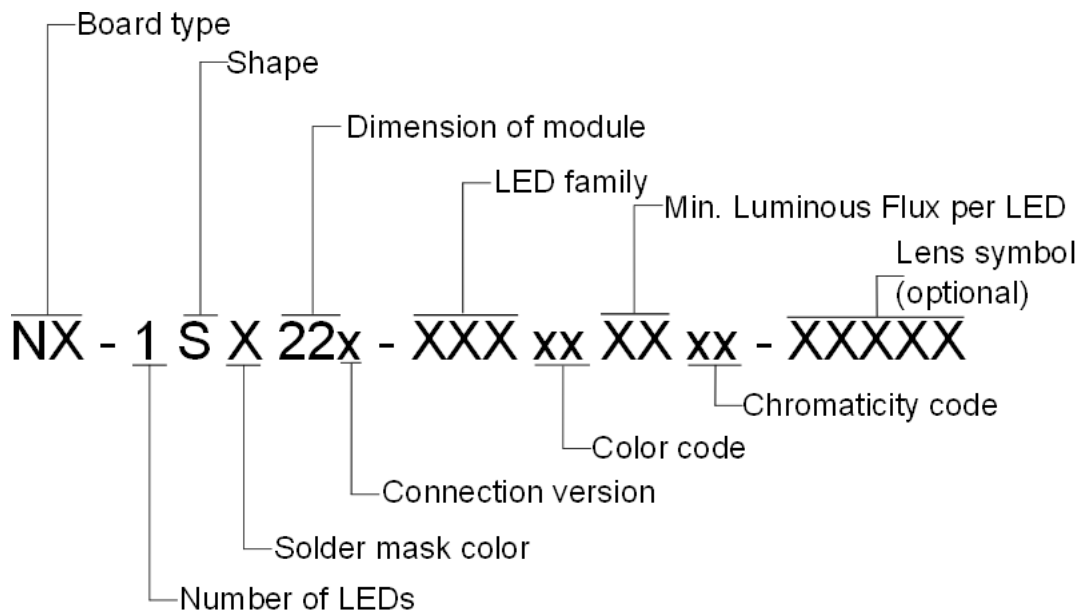
## SHORT DESCRIPTION

- Star MCPCB board with 22 mm diameter
- four LEDs integrated in one component
- Designed for Cree Xlamp High-Power LEDs MC-E
- Compatible Lenses: appropriate lenses from Ledil and Ledlink families





# PRODUCT NOMENCLATURE



## Board Type<sup>1</sup>

NX - 1SX22x- XXXxxXXxx- XXXXX

	H [mm]	Material	Dielectric thermal conductivity [W/(m·K)]	Dielectric thickness [μm]
<b>NV</b>	2	1060 Alloy	1.5	80
<b>NS</b>	1.6			
<b>NT</b>	2	5052 Alloy	2	60
<b>NC</b>	1.6			
<b>NM</b>	2	Cu	3	60
<b>NB</b>	2	5052	depends on design <sup>2</sup> 10÷50	60



### Shape

NX- 1SX22x- XXXxxXXxx- XXXXX

Shape name	
<b>R</b>	Rectangular
<b>C</b>	Round
<b>S</b>	Star
<b>P</b>	Polygonal

### Soldermask Color<sup>3</sup>

NX- 1SX22x- XXXxxXXxx- XXXXX

Color name	
<b>B</b>	Black
<b>O</b>	Orange
<b>W</b>	White

### Connection Version

NX- 1SX22x - XXXxxXXxx- XXXXX

Connection Type	
<b>I</b>	Individual
<b>S</b>	Serial
<b>P</b>	Parallel



### LED family

NX- 1SX22x- XXX xxXXxx- XXXXX

	Description	Suggested Board Type
<b>MCE</b>	Cree Xlamp MC-E Type	NV, NS, NT, NC, NM

### Color

NX- 1SX22x- XXXxx XXxx- XXXXX

	Color name	CTT [K]	Led families
<b>EW4</b>	Easy White (4-step)	4000	MCE
		3500	
		3000	
		2700	
<b>EW2</b>	Easy White (2-step)	4000	MCE
		3500	
		3000	
		2700	

	Color name	Dominant Wavelength / CTT		Led families
		Range		
		min	max	
<b>RGBWC</b>	Red	620 nm	630 nm	MCE
	Green	520 nm	535 nm	
	Blue	450 nm	465 nm	
	Cool White	5700 K	7000 K	
<b>RGBWN</b>	Rednm	620 nm	630 nm	MCE
	Green	520 nm	535 nm	
	Blue	450 nm	465 nm	
	Neutral White	3700 K	4300 K	

### Minimal Luminous Flux per LED

NX- 1SX22x- XXXxxXXxx- XXXXX

Please refer to proper CREE Binning & Labeling documentation(located at <http://www.cree.com/products/xlamp.asp>) paragraph "Luminous or radiant flux group".



### Chromaticity

NX- 1SX22x- XXXxxXXxx - XXXXX

Please refer to proper CREE Binning & Labeling documentation (located at <http://www.cree.com/products/xlamp.asp>) paragraph "Chromaticity or dominant-wavelength group".

### Lens Symbol (optional)<sup>4</sup>

NX- 1SX22x- XXXxxXXxx- XXXXX

Following table contains some of example lenses for nGine.

Family	Example	Mounting	Manufacturer
BJB	BJB10193, BJB10194, BJB10208	Glue	
RGB-X-MC	10944, 10945, 10961	Glue	

### Ordering Code Example

**NV-1SB22-MCERGBCW** – 2 mm 1060 Alloy board with black soldermask, 1 MCE RGBW LED,

**NV-1SB22-MCEWCMWG-BJB10193** – 2 mm 1060 Alloy board with black soldermask, 1 MCE cool white LED, MWG bin, BJB and 10193 Carclo lens.

## ENVIROMENTAL CAUTION



It is prohibited to dispose of obsolete and waste electrical and electronic equipment together with regular household wastes. They should be properly sorted and recycled. old electrical and electronic equipment should be returned to a waste collection point established by a waste-management service. Waste electrical and electronic equipment can be broken down to base materials and then recycled. For more information regarding waste management please contact your local authorities waste-management service or the seller of electrical and electronic devices.

## NOTES

- <sup>1</sup>Another thickness available on request.
- <sup>2</sup>Blind holes technology.
- <sup>3</sup>Another soldermask color available on request.
- <sup>4</sup>More lenses available on request.