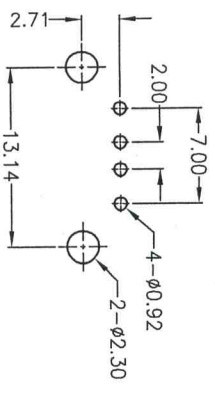
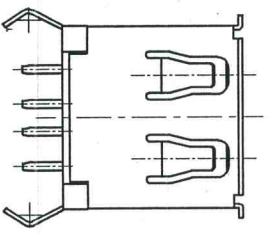
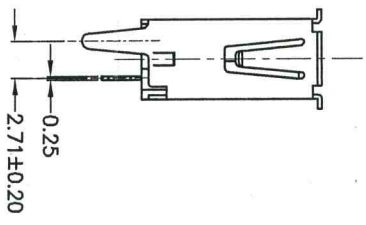
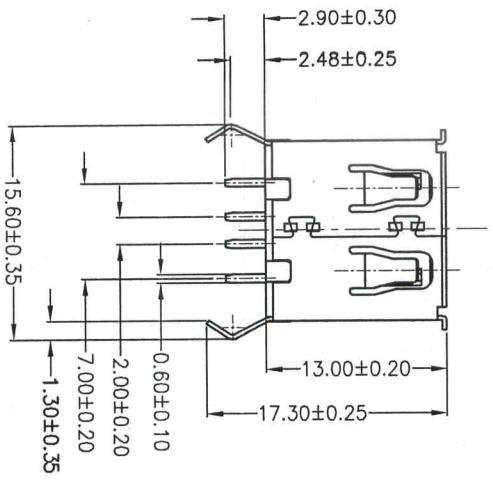
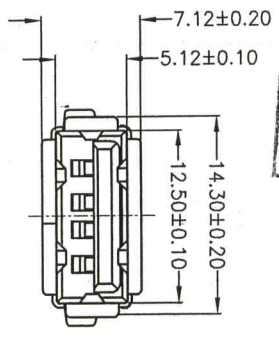


工程出图



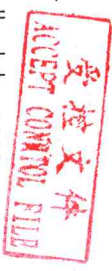
RECOMMENDED P.C.B HOLE LAYOUT
TOP VIEW(TOLERANCE:±0.10)



REV	DESCRIPTION	DATE	ECN NO.	CHANGER
A/1	Modify drawings	09.05.12		JACK

- Specification
1. Current Rating: 1.5AMP at 250V AC
Voltage Rating: 30V
 2. Insulation Resistance: 1000MΩ Min
 3. Contact Resistance: 30mΩ Max
 4. Dielectric Withstanding Voltage: 500V AC
 5. Temperature Range: -20°C to +60°C
 6. Mechanical Characteristics:
Insertion Force: 35 Newtons maximum
Extraction Force: 10 Newtons minimum

P/N NOTE:
USB-A1D42F-XX4X



Shell plate spec:
T=Tin plated, N=Nickel plated
Housing colour:
B=Black, N=Nature, W=White
Contact plate spec:
0=FU", 1=3U", 2=6U",
3=15U", 4=30U"

NO.	VARIETY	MATERIAL	QT, Y	REMARK
4	Shell	C2680H	1	T=0.30 Plating nickel/Tin
2	Housing	P.B.T	1	UL94V-0 Nature/Black/White
1	Contact	C2680EH	4	T=0.25 Plating Gold

工程部

CZT DONGGUAN ZHENGDE (YIHUA) CONNECTOR CO., LTD

X. ±0.38	X' ±4'	UNIT: mm	DR: JACK	TITLE: USB A TYPE(FEMALE)
XX ±0.25	X' ±2'	3RD:	DE: JACK	DIP 180° L=13.0
XXX ±0.10	XXX'	SCALE: 1:1	CHKD:	SHEET: 1/1
CUSTOMER DRAWING	REV: A/1	APPD:	D/N: 1014-0042	M/N: