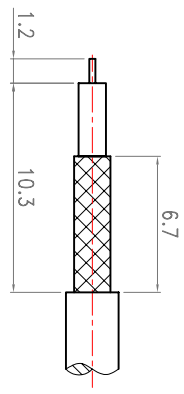
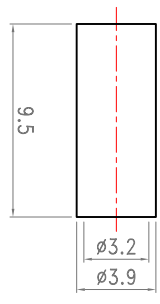
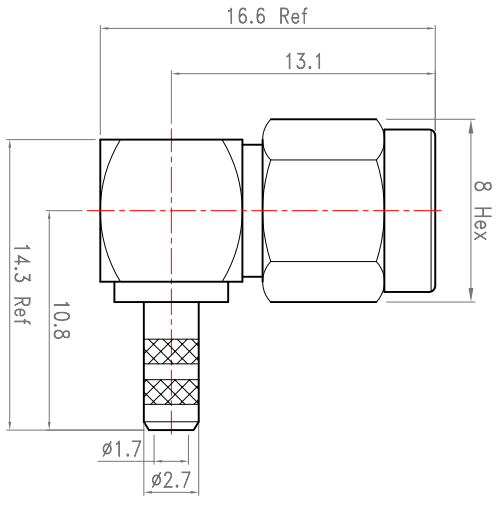
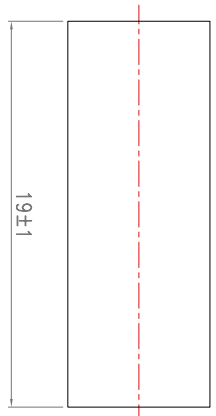


| Revisions |        |   |            |
|-----------|--------|---|------------|
| ISS       | Symbol | Description                               | Date       |
| B         |        | CHE for New Drawing Frame & New PN System | 2006/07/10 |
|           |        |   |            |
|           |        |   |            |



Recommended Cable Stripping Dim's



| ITEM | Description    | Material | Finish    | Part Number |
|------|----------------|----------|-----------|-------------|
| 5    | Shrinking Tube | PE       | None      |             |
| 4    | Pin            | Brass    | 30u" Gold |             |
| 3    | Insulator      | PTFE     | None      |             |
| 2    | Body           | Brass    | Gold      |             |
| 1    | Shell          | Brass    | Gold      |             |

| Scale | Abbr. | Date       | Rev. |
|-------|-------|------------|------|
| NTS   | ST    | 2006.07.12 | B    |

Tolerances:  
 .X ±0.5  
 .XX ±0.3  
 .XXX ±0.2  
 All Dimensions in mm  
 (Unless Otherwise Specified)

Drawn: *g. g*  
 Checked: *Mindy*  
 Approved: *g. gurn*

QTY  
 2006.07.12  
 2006.07.12  
 2006.07.12

Proprietary Note

This document contains information proprietary to S-Comm, which is either copyrighted, or patent applied for, and / or protected by trade secret laws.  
 This document or parts thereof, may not be used disclosed or reproduced in any form by any method, or for any purpose, without the written permission of S-Comm, Taiwan.  
 Customer P/N: Nil

DWG.NO. S104L0G27-M-4

TITLE:

SMA R/A Crimp Plug for RG174 Cable

ROHS COMPLIANCE



S-Comm Enterprise Co., Ltd

ISO 9001 Certified