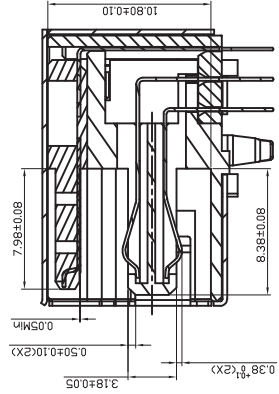
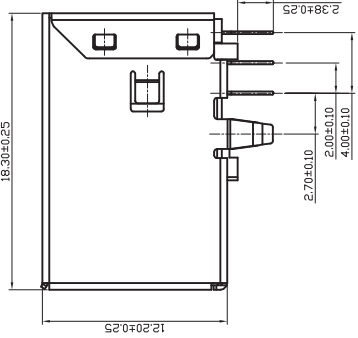
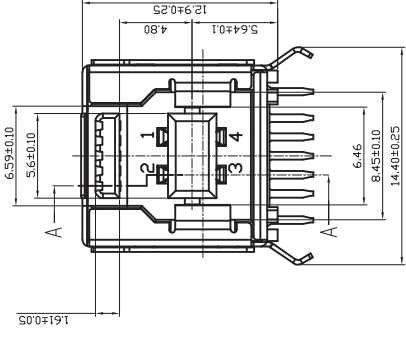
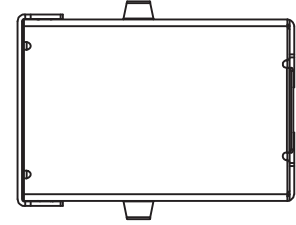
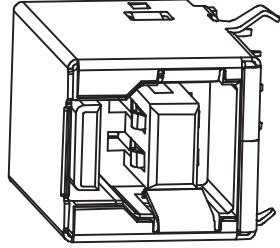
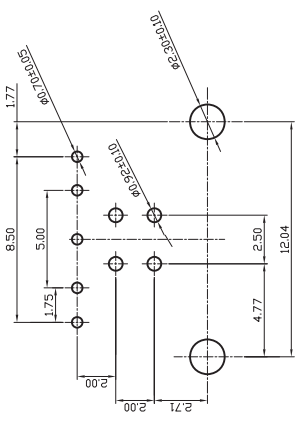
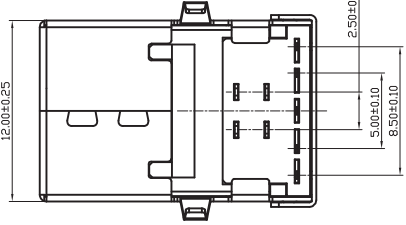


1 2 3 4 5 6



SECTION A-A



PCB LAYOUT  
TOLERANCE: ±0.05

USB3B-07XXE001

Contact Finish :  
10: 10u"Gold  
15: 15u"Gold  
30: 30u"Gold  
01: G/F  
05: 5u"Gold

- NOTE:  
1.MATERIAL:  
1.1 INSULATOR:HIGH TEMPEATURE PLASTIC UL 94 V-0 BLUE  
255°C - 265°C. 5 sec. Max.  
1.2 CONTACT:COPPER ALLOY(T=0.20mm)  
1.3 SHELL:BRASS(T=0.30mm)  
2.ELECTRICAL CHARACTERISTICS:  
2.1 CONTACTRESISTANCE:30mΩ MAXIMUM  
2.2 CONTACT CURRENT RATING:1.5A  
2.3 DIELECTRIC WITHSTANDING VOLTAGE:500 V R.M.S.  
2.4 INSULATION RESISTANCE 1000 MEGOHMS MIN  
2.5 OPERATING TEMPERATURE:-40°C~85°C  
3.MECHANICAL CHARACTERISTICS:  
3.1 MATING FORCE:3.57kg MAX  
3.2 UNMATED FORCE:1.02kg MIN  
3.3 DURABILITY:MANDATORY:5,000 CYCLES  
4.PLATING  
4.1 TERMINAL CONTACT:30" GOLD PLATING ALL OVER 50u" MIN NICKEL ON NICKEL AND 80u" MIN Tin ALL OVER 50u" MIN NICKEL ON SOLDER AREA  
4.2 SHELL:80u" MIN.NICEL OVER 20"MIN COPPER

| Pin NUMBER | SIGNAL NAME |
|------------|-------------|
| 1          | VBUS        |
| 2          | D-          |
| 3          | D+          |
| 4          | GND         |
| 5          | StdA_SSRX-  |
| 6          | StdA_SSRX+  |
| 7          | GND_DRAIN   |
| 8          | StdA_SSTX-  |
| 9          | StdA_SSTX+  |
| Shell      | Shield      |

| LTR | ECN | NO | REVISION | RECORD | DRAW | DATE |
|-----|-----|----|----------|--------|------|------|
|     |     |    |          |        |      |      |

| TOLERANCE:  | UNIT        | SCALE | REV: A | DESIGN: | APPR: | DRAW: | Andy | P/N: | USB3B-07XXE001 |
|-------------|-------------|-------|--------|---------|-------|-------|------|------|----------------|
| X. ± 0.50   | X.° ± 1°    | 1/1   | 1:1    | 1:1     |       |       |      |      |                |
| .X ± 0.30   | .X° ± 1°    |       |        |         |       |       |      |      |                |
| .XX ± 0.20  | .XX° ± 1.0° |       |        |         |       |       |      |      |                |
| .XXX ± 0.10 |             |       |        |         |       |       |      |      |                |

# Wellco T&C Co., Ltd.

ITEM:  
USB 3.0 B/F DIP 90度

DRW NO: C-USB3B-07XXE001

1 2 3 4 5 6