

Revisions

ISS	Symbol	Description	Date
B		CHE for New Drawing Frame & New PN System	2006/07/11

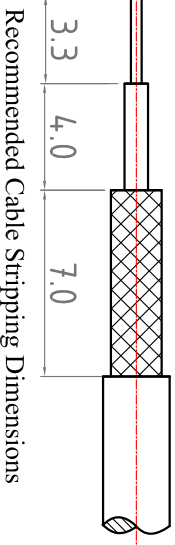
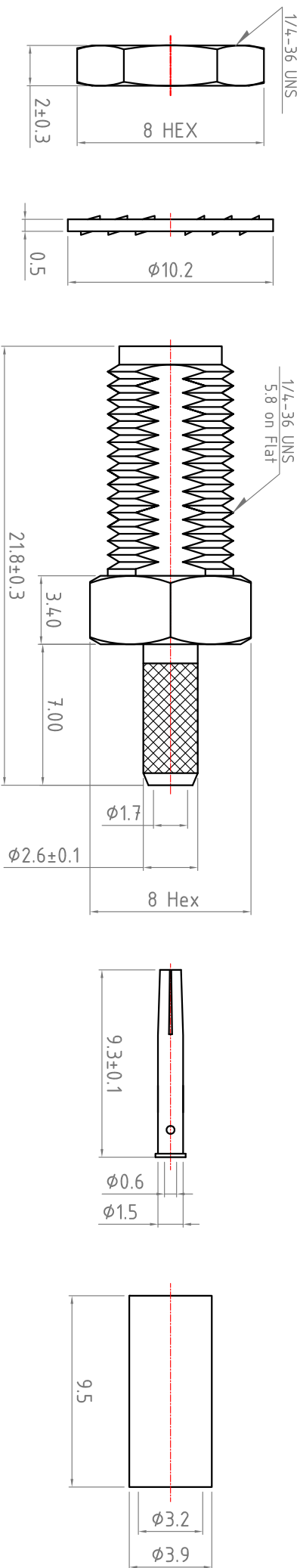
Outline Drawing

Note :
1. Single Crimp: Providing recommended dimensions for ferrule.

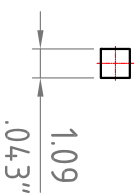
Dual Crimp: Providing recommended dimensions for ferrule and center pin.
Please advise Single/Dual in advance to avoid any inconvenience.

2. All metal material is in compliance with RoHS Directive
2002/95/EC Annex 4 (1) Section 6 paragraph.

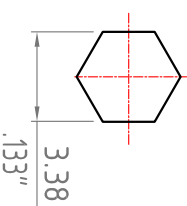
3. Recommended Crimped Hand Tool : for Center Pin P/N - **HT-301V**
for Ferrule P/N - **HT-H116N**



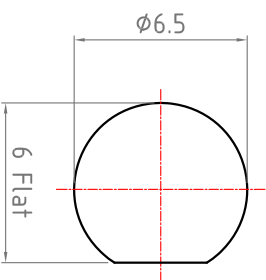
Recommended Crimped Dimensions for Center Pin



Recommended Crimped Dimensions for Ferrule



Recommended Mounting Hole



*Change new drawing frame in Blue Color since 2009/07/01 , to comply with Company CIS Policy.

ROHS COMPLIANCE

ITEM	Description	Material	Finish	Part Number	QTY
6	Nut	Brass	Nickel		
5	Washer	Steel	Nickel		
4	Ferrule	Brass	Nickel		
3	Pin	P. Bronze	Gold		
2	Insulator	PTFE	None		
1	Body	Brass	Nickel		

Scale	Abbr.	Date	Rev.
NTS	ST	2012/02/09	B

Drawn	Checked	Approved
<i>Mark</i>	<i>Ryan</i>	<i>Y. Sun</i>

DWG. NO.	TITLE
S204WON03-M-1	SMA Bulkhead Dual Crimp Jack for RG174,188,316;B7805A;URM95 Cable

Tolerances :
X .±0.2
.XX ±0.1
.XXX±0.05

All Dimensions in mm
(Unless Otherwise Specified)

Proprietary Note
This document contains information proprietary to S-Comm, which is either copyrighted, or patent applied for, and / or protected by trade secret laws. This document or parts thereof, may not be used, disclosed or reproduced in any form by any method, for any purpose, without the written permission of S-Comm, Taiwan.

