

## DETAILS

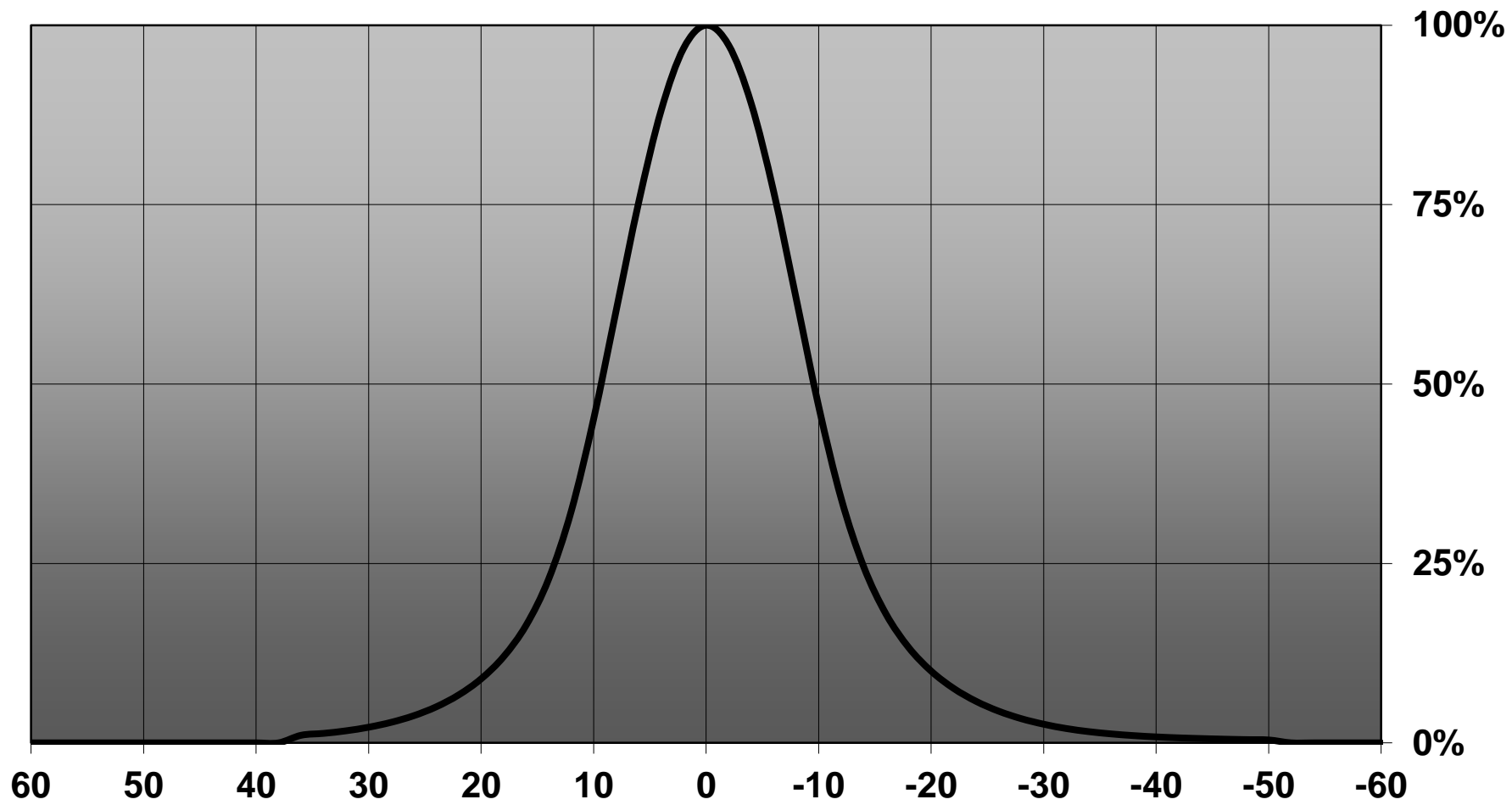
<b>Product Number</b>	C10684_EVA-D
<b>Family</b>	Eva
<b>Type</b>	Lens
<b>Color</b>	clear
<b>Diameter</b>	35 mm
<b>Height</b>	16,4 mm
<b>Style</b>	round
<b>Optic Material</b>	PMMA
<b>Holder Material</b>	
<b>Fastening</b>	
<b>Status</b>	production ready
<b>ROHS Compliant</b>	Yes
<b>Date Updated</b>	6/11/2015



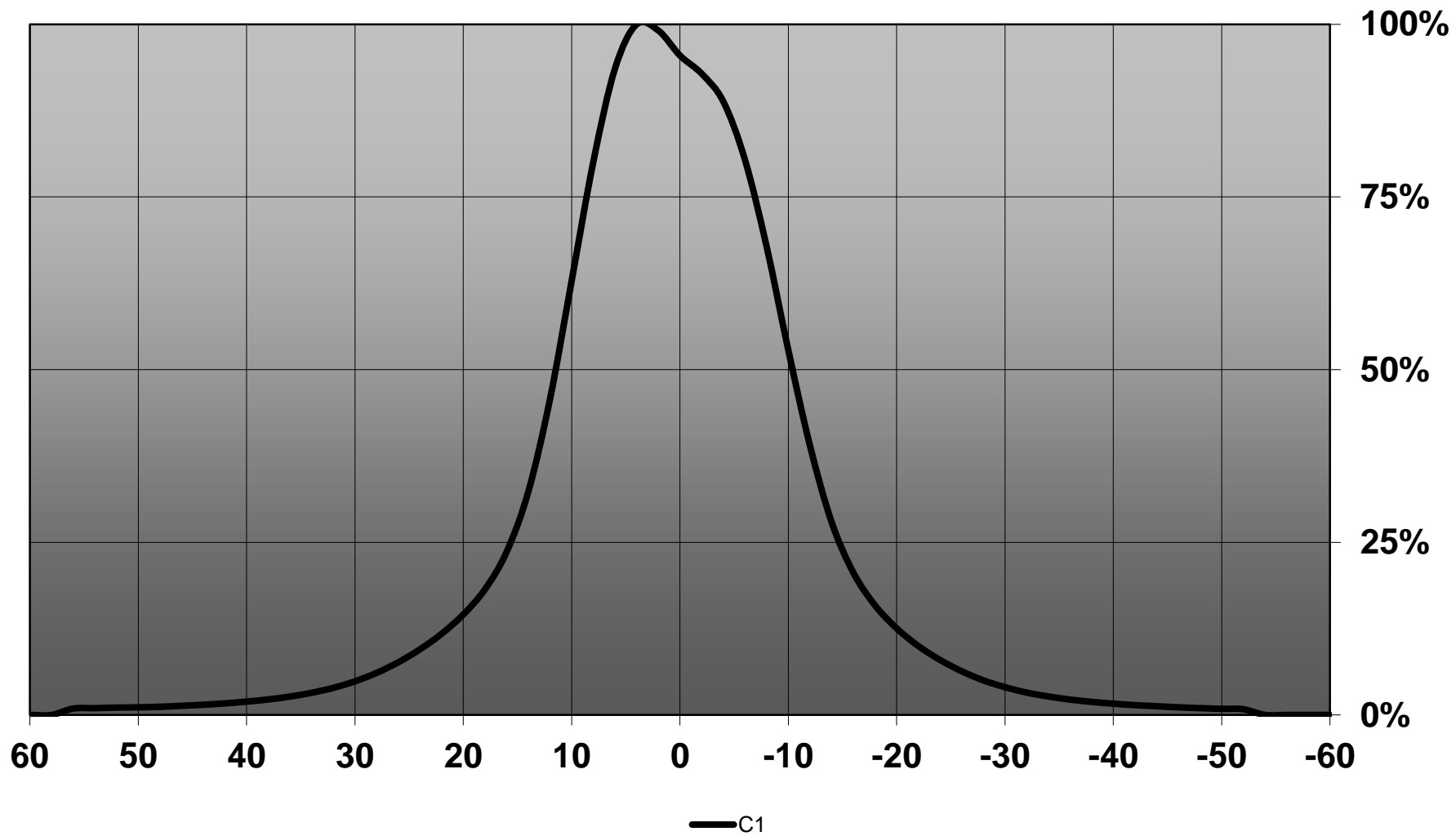
## OPTICAL PROPERTIES

LED	Viewing	Light	Effi-	cd/lm	Connector
	Angle	Beam	ciency		
MC-E	16 deg	Diffuser	92 %	6.000	-
XM-L	16 deg	Diffuser	91 %	-	-
XT-E	14 deg	Diffuser	-	7.500	-
XP-G2	16 deg	Diffuser	87 %	-	-
MHB-A	19 deg	Diffuser	83 %	5.400	-
XHP35 HI	22 deg	Diffuser	79 %	3.900	-
LUXEON M	21 deg	Diffuser	90 %	4.200	-
LUXEON MZ	16 deg	Diffuser	88 %	7.800	-
LUXEON 5258	sim: 17	Diffuser	sim: 92 %	sim: 8.600	-
LUXEON 5050	18 deg	Diffuser	91 %	6.400	-
NS9x383	16 deg	Diffuser	89 %	6.800	-
NSMx286M	20 deg	Diffuser	91 %	4.400	-
Duris S8	18 deg	Diffuser	84 %	6.200	-
Duris P10	sim: 20	Diffuser	sim: 94 %	sim: 6.850	-
Z8Y15	13 deg	Diffuser	86 %	11.530	-
Z8Y19	13 deg	Diffuser	87 %	11.000	-

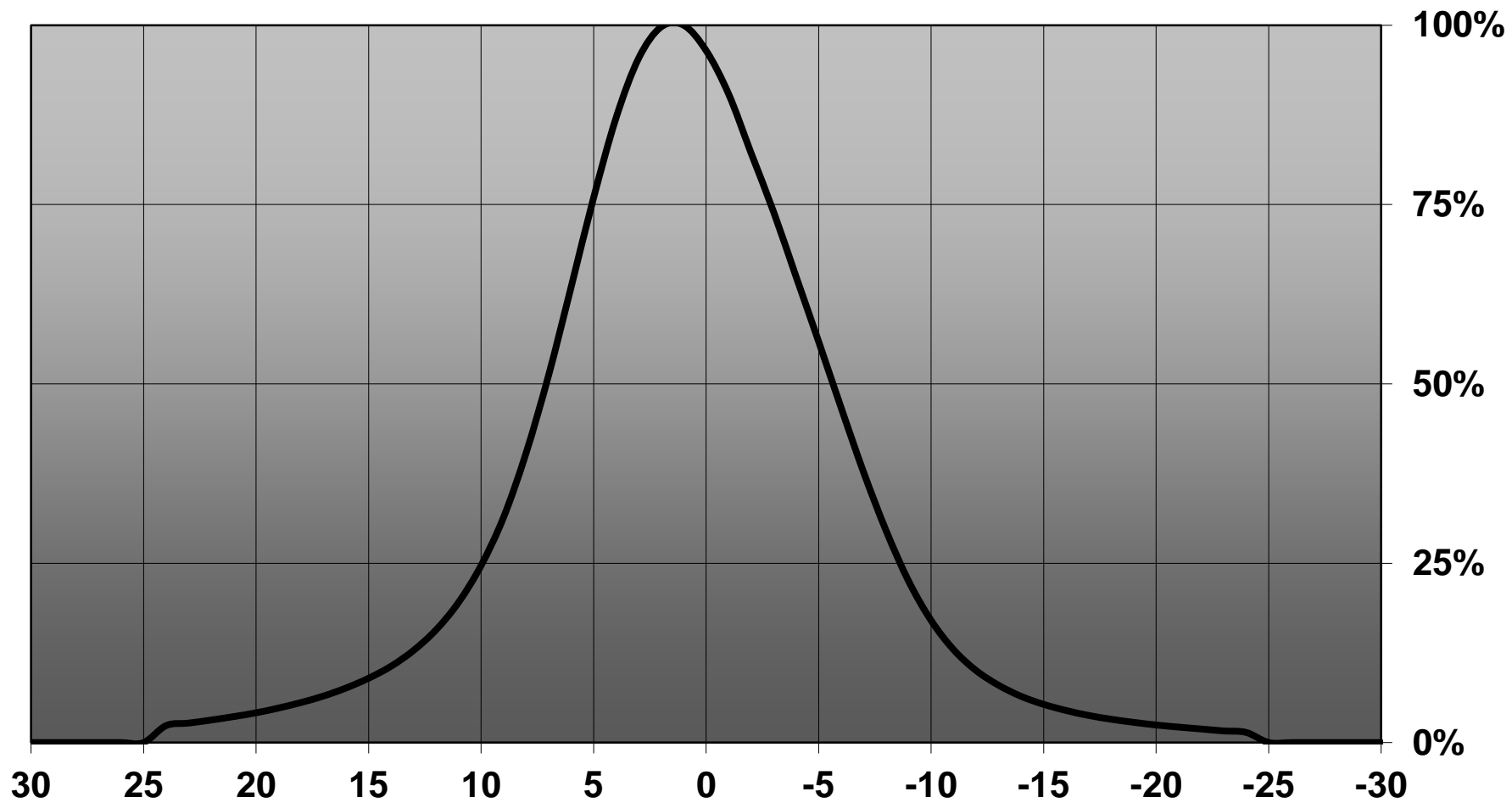
### Relative intensity of C10684\_EVA-D\_(MH-B)



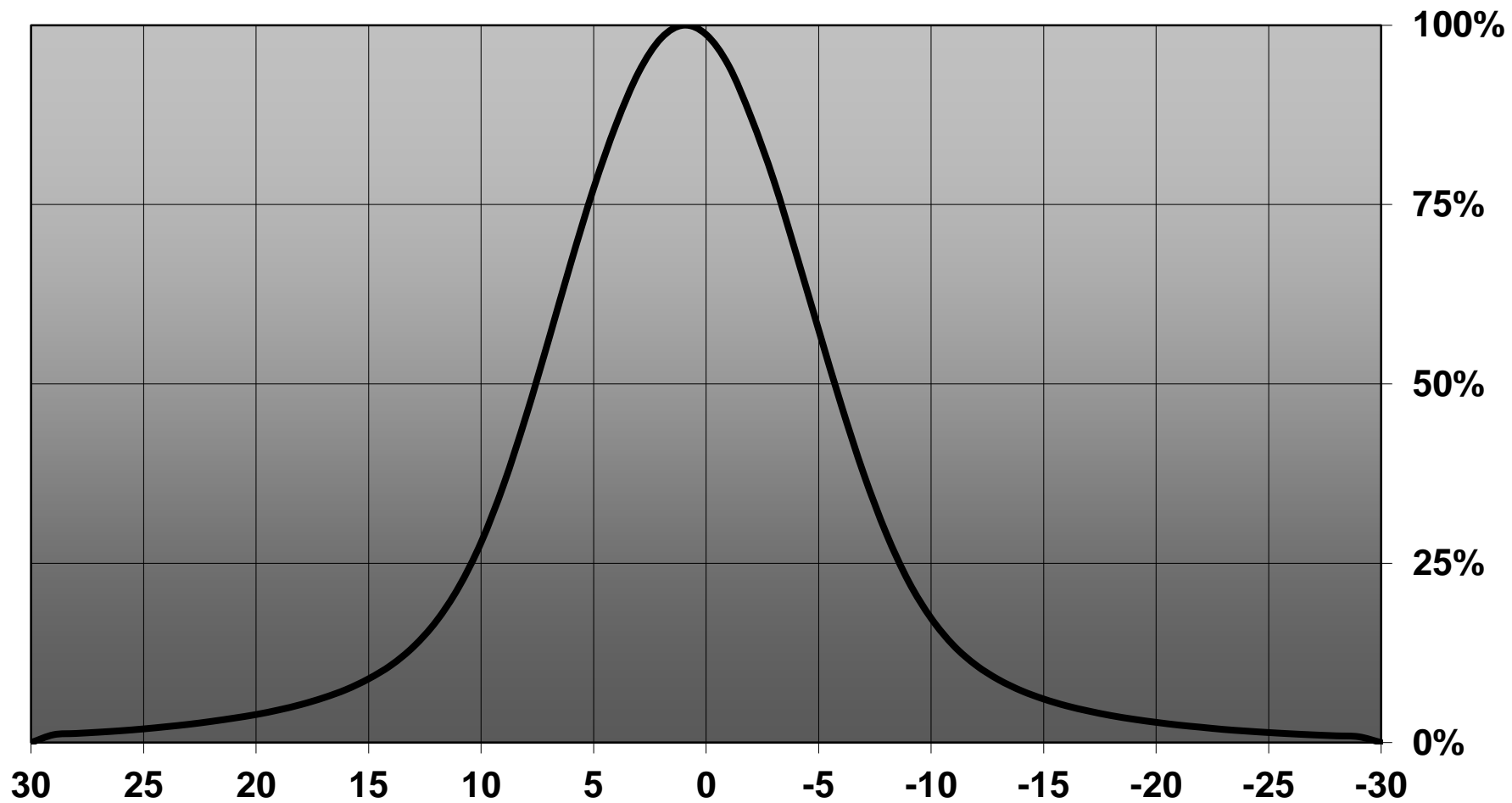
# Relative intensity of C10684\_EVA-D\_(XHP35\_HI)



Relative intensity of C10684\_EVA-D\_(SZ8Y15)



**Relative intensity of C10684\_EVA-D\_(SZ8Y19)**

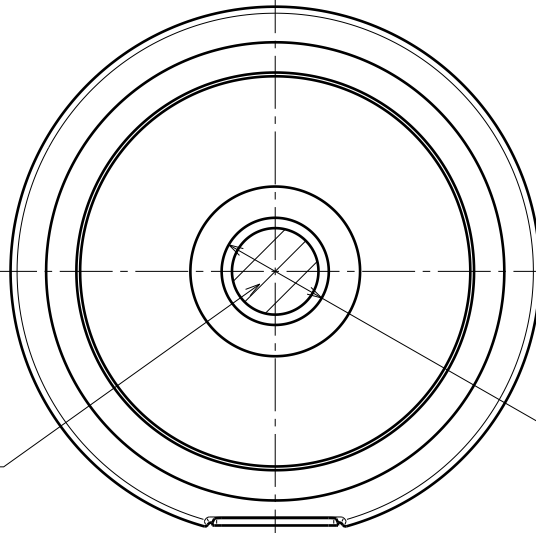
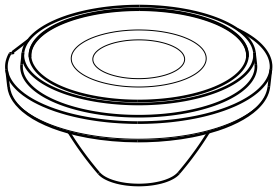


D

C

B

A

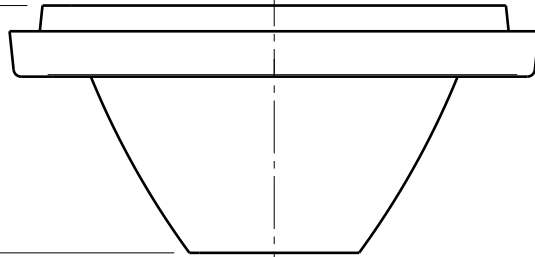


Clear finish

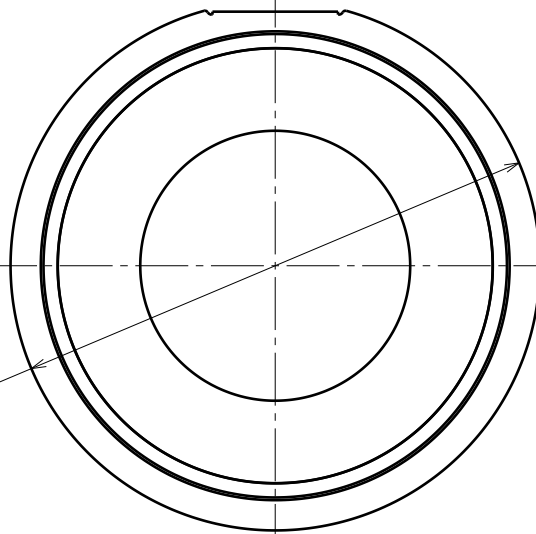
Ø 7.1

Ø 30.6

16.4



Side view



Ø 35

Top view

Tolerances if not otherwise shown:  
 According to DIN ISO 2768-1  
 Linear measures:  
 Up to 30mm class M, otherwise class C.

According to DIN ISO 2768-2  
 Form and position:  
 class L

Raw material(s):  
 PMMA 8N

This drawing is our property.  
 It can't be reproduced  
 or communicated without  
 our written agreement.



Ledil Oy  
 Salorankatu 10  
 24100 SALO  
 Finland

DRAWING TITLE

Datasheet Eva D Lens

DRAWN BY  
ah

DATE  
1.3.2013

CHECKED BY

DATE

SIZE  
A4

DRAWING NUMBER

11677

REV  
2

DESIGNED BY  
HH

DATE  
26.08.2008

SCALE

2:1

WEIGHT (g)

SHEET

1/1

D

A

4

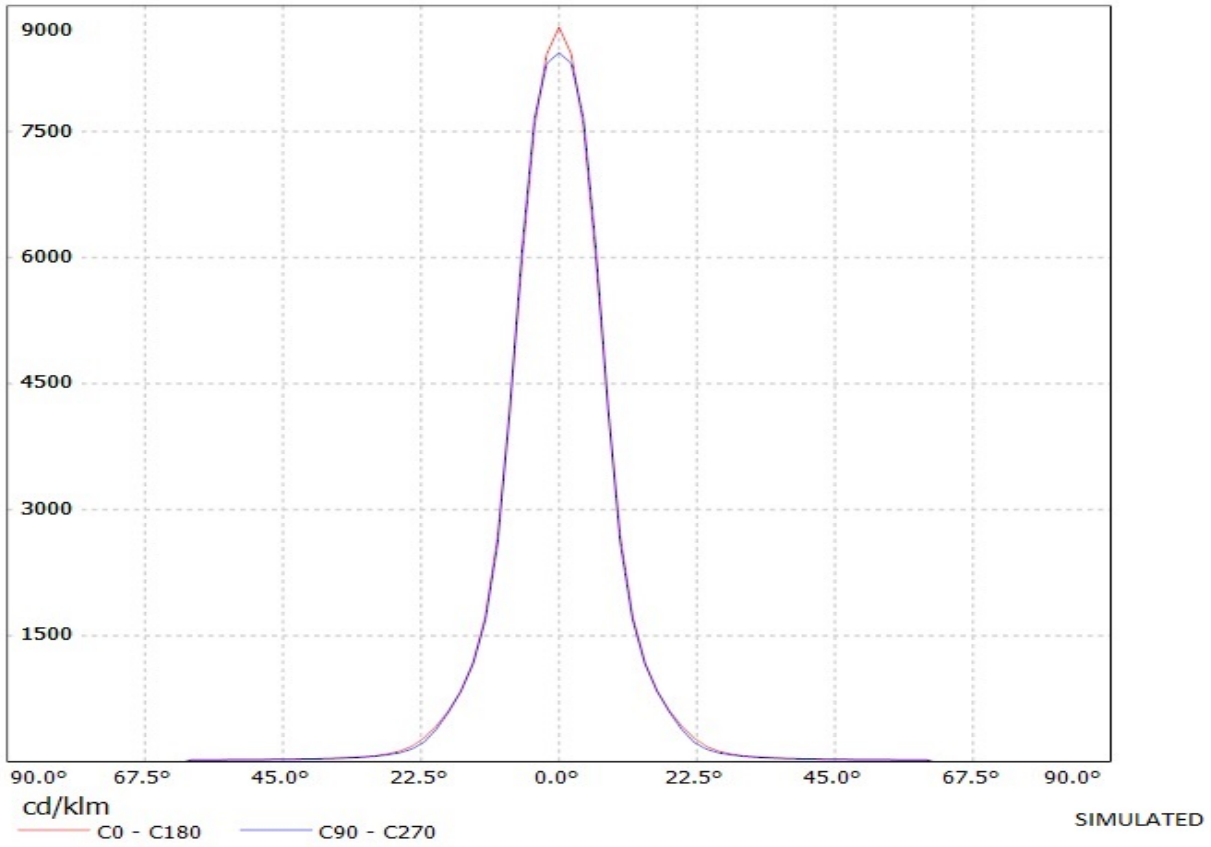
3

2

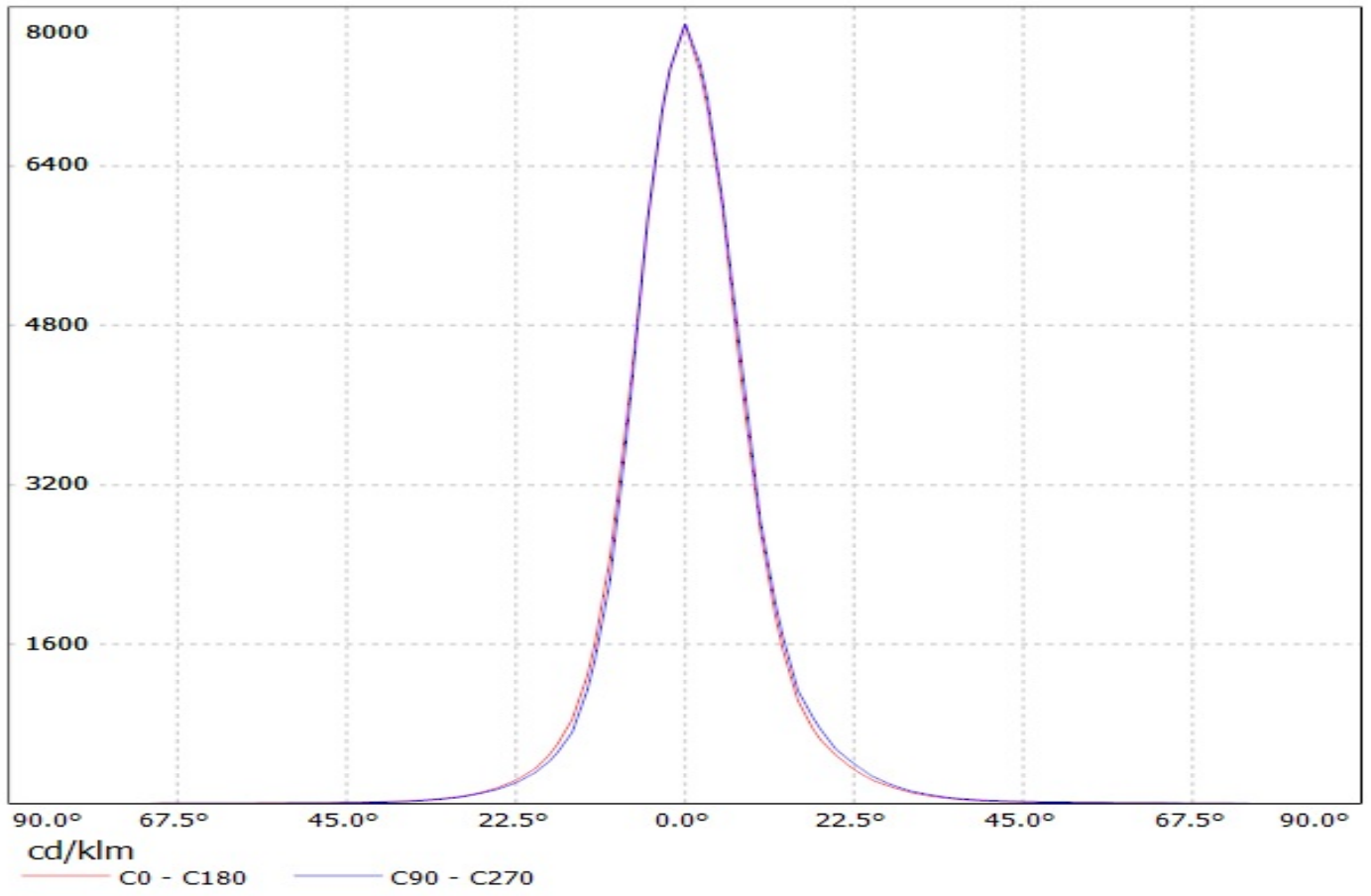
1

1

Luminaire: Ledil Oy EVA-D EVA-D  
Lamps: 1 x Cree MC-E (white)



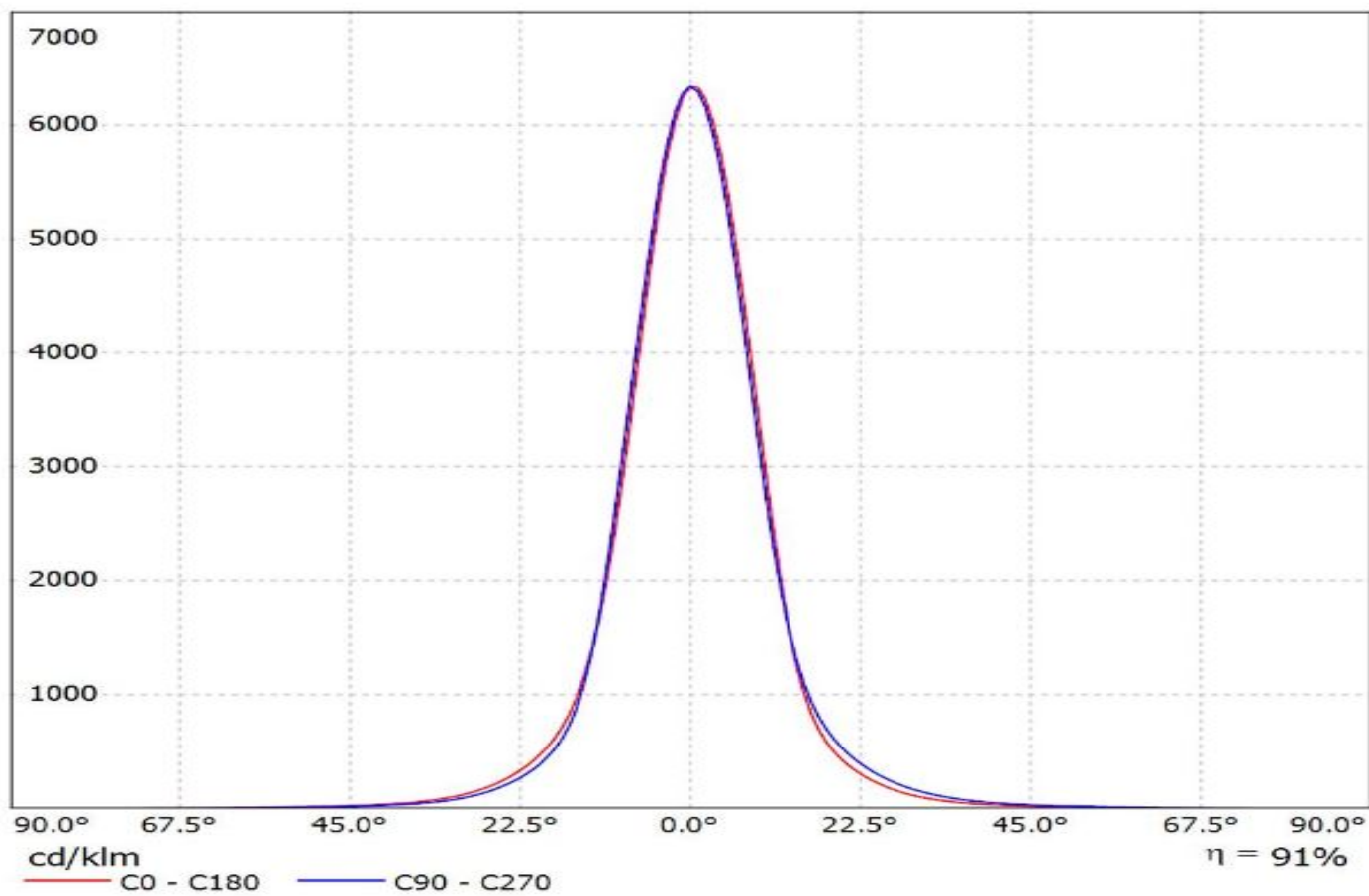
Luminaire: LEDII OY C10684\_EVA-D\_(Luxeon\_MZ) Efficiency=88%  
Lamps: 1 x Philips Lumileds Luxeon MZ (389lm @ 250mA) CCT=3800K P=2.8W I=250mA



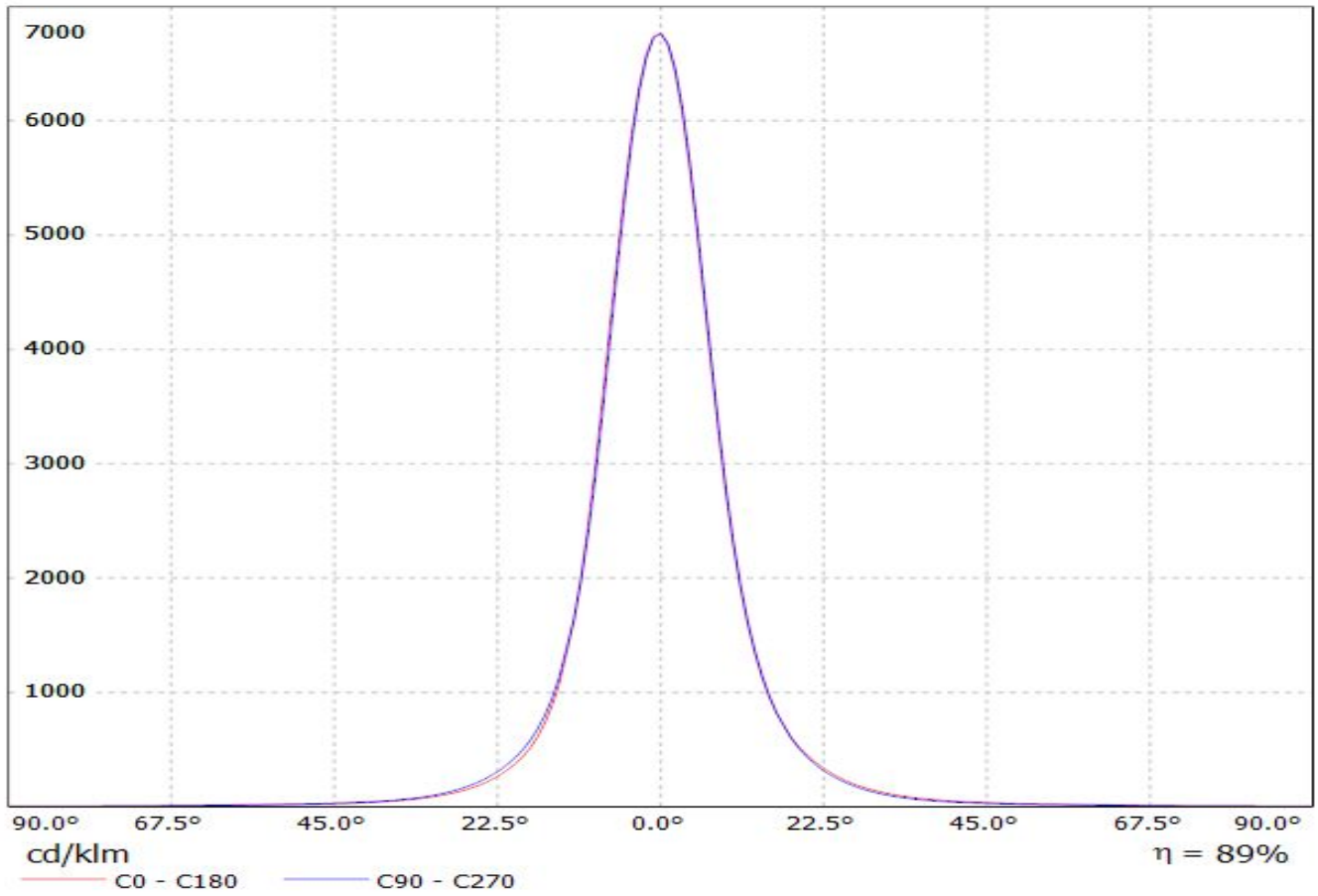


Luminaire: LEDiL Oy C10684\_EVA-D\_(Luxeon\_5050)

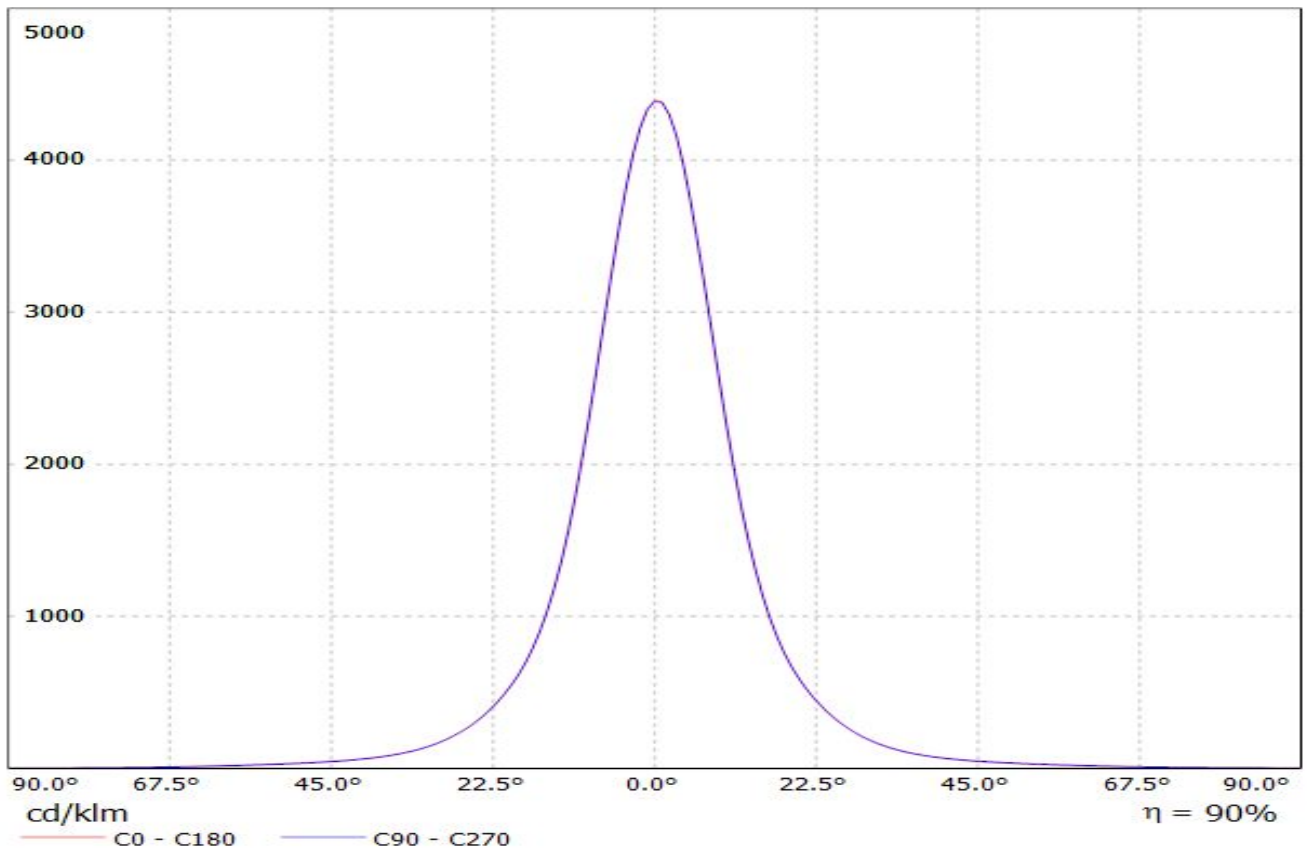
Lamps: 1 x Luxeon\_5050\_316.623lm@80mA\_CCT=5700K\_P=1.82294W\_I=0.080A\_70CRI



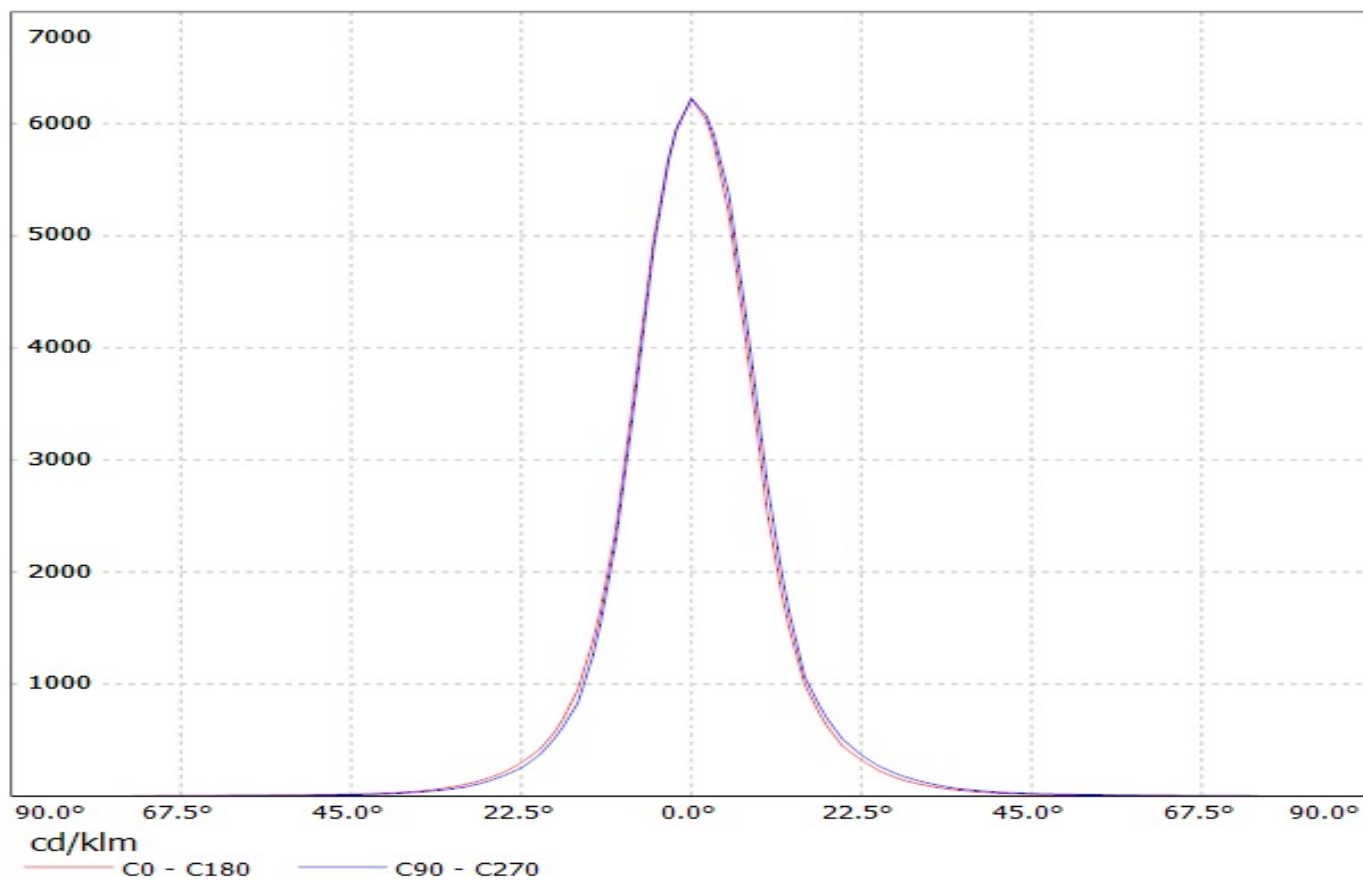
Luminaire: LEDiL Oy C10684\_EVA-D\_(NS9x383) Eff. 89.4%  
Lamps: 1 x Nichia NS9x383 (105lm@250mA)



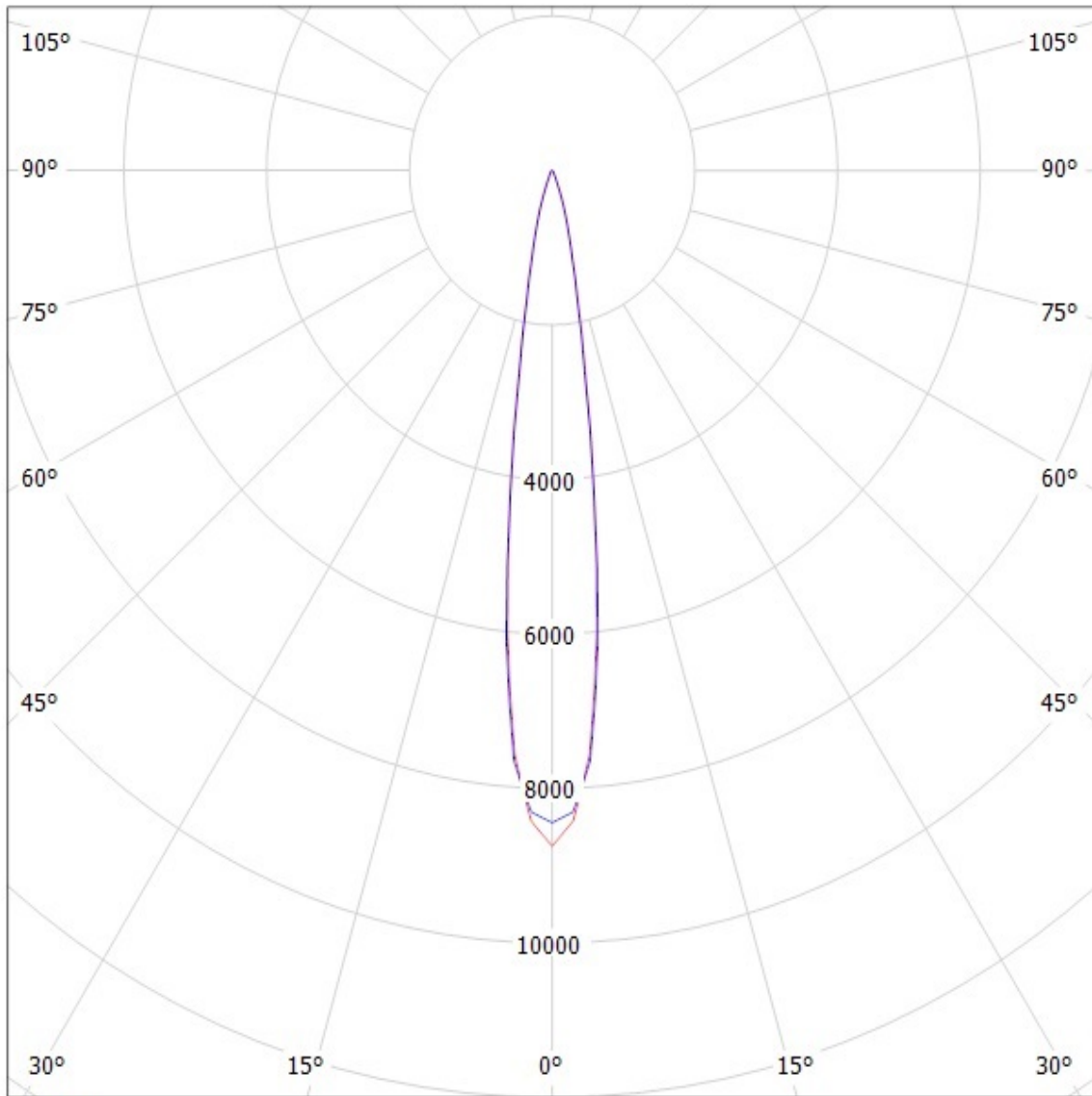
Luminaire: LEDiL Oy C10684\_EVA-D\_(NICHIA\_286) Eff.91%  
Lamps: 1 x NICHIA\_286\_(NSML286ME) 322.274lm@100mA CCT=3000K P=3.42532W I=100.1mA



Luminaire: LEDil Oy C10684\_EVA-D\_(DURIS\_S8) Efficiency=84%  
Lamps: 1 x Osram DURIS S8 (GW P9LMS1.ĚC) 192lm @ 100mA CCT=2900K P=1.8W I=100mA



Luminaire: Ledil Oy EVA-D EVA-D  
Lamps: 1 x Cree MC-E (white)



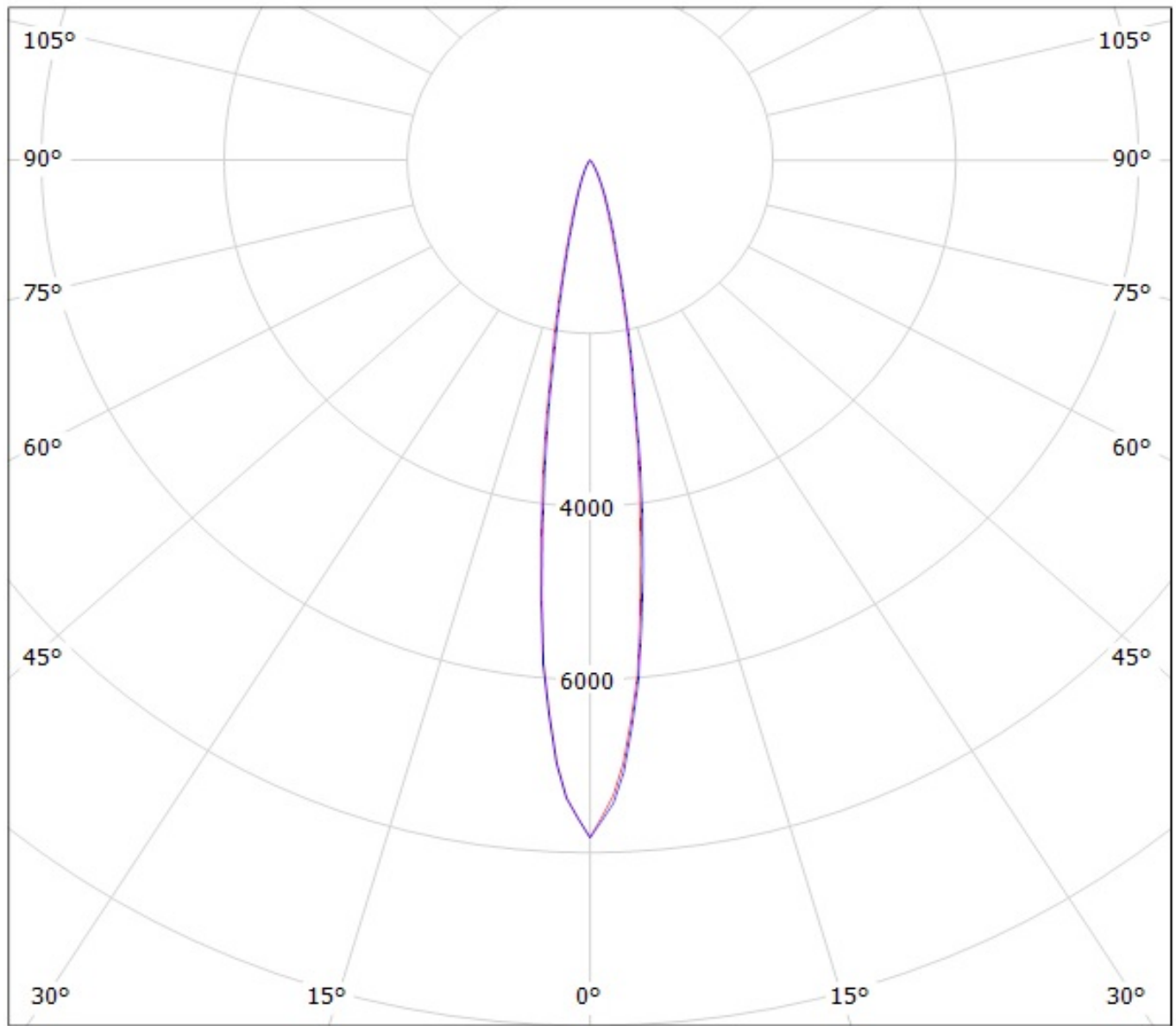
cd/klm

— C0 - C180    — C90 - C270

SIMULATED

Luminaire: LEDII OY C10684\_EVA-D\_(Luxeon\_MZ) Efficiency=88%

Lamps: 1 x Philips Lumileds Luxeon MZ (389lm @ 250mA) CCT=3800K P=2.8W I=250mA



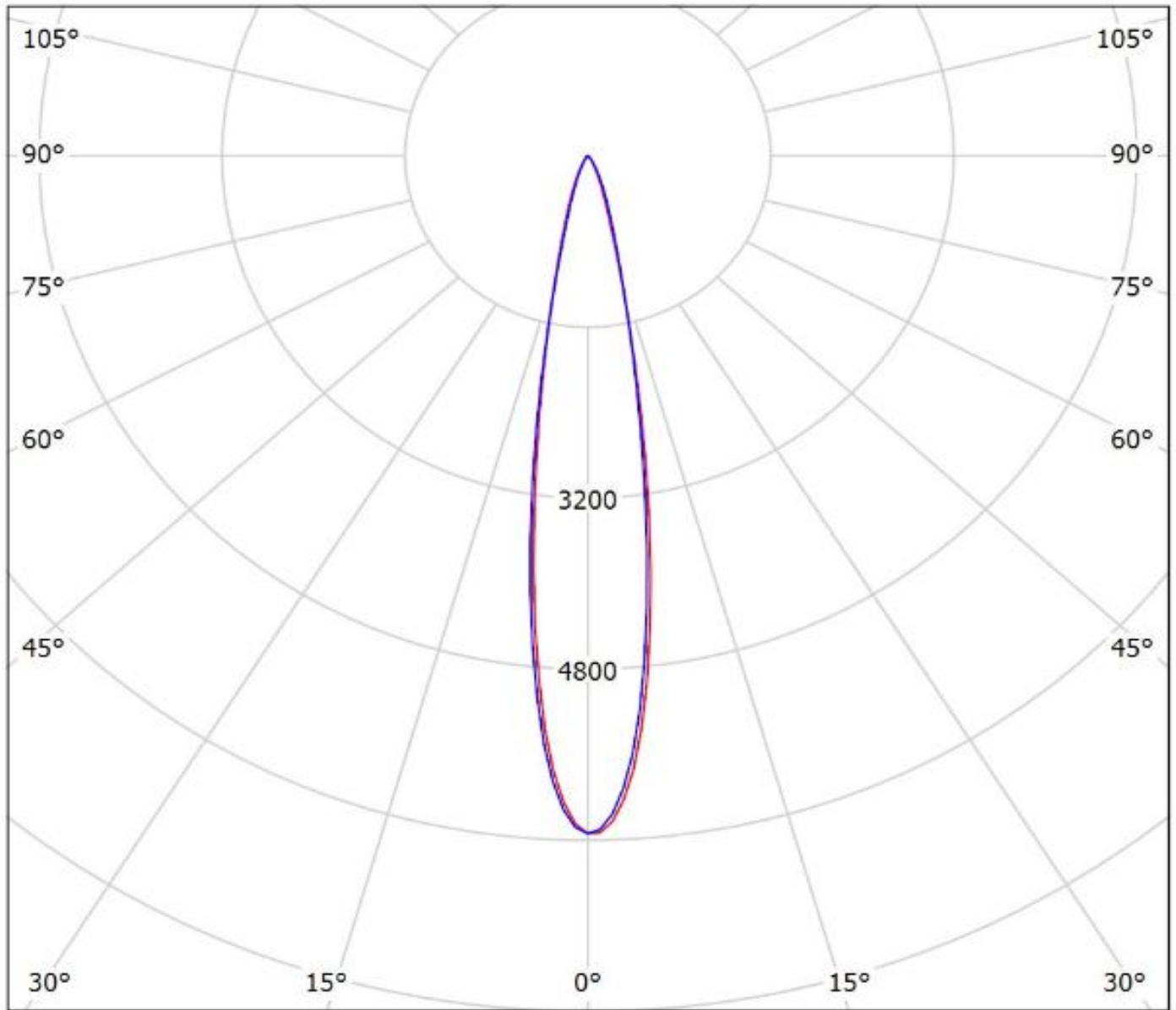
cd/klm

— C0 - C180

— C90 - C270

Luminaire: LEDiL Oy C10684\_EVA-D\_(Luxeon\_5050)

Lamps: 1 x Luxeon\_5050\_316.623lm@80mA\_CCT=5700K\_P=1.82294W\_I=0.080A\_70CRI

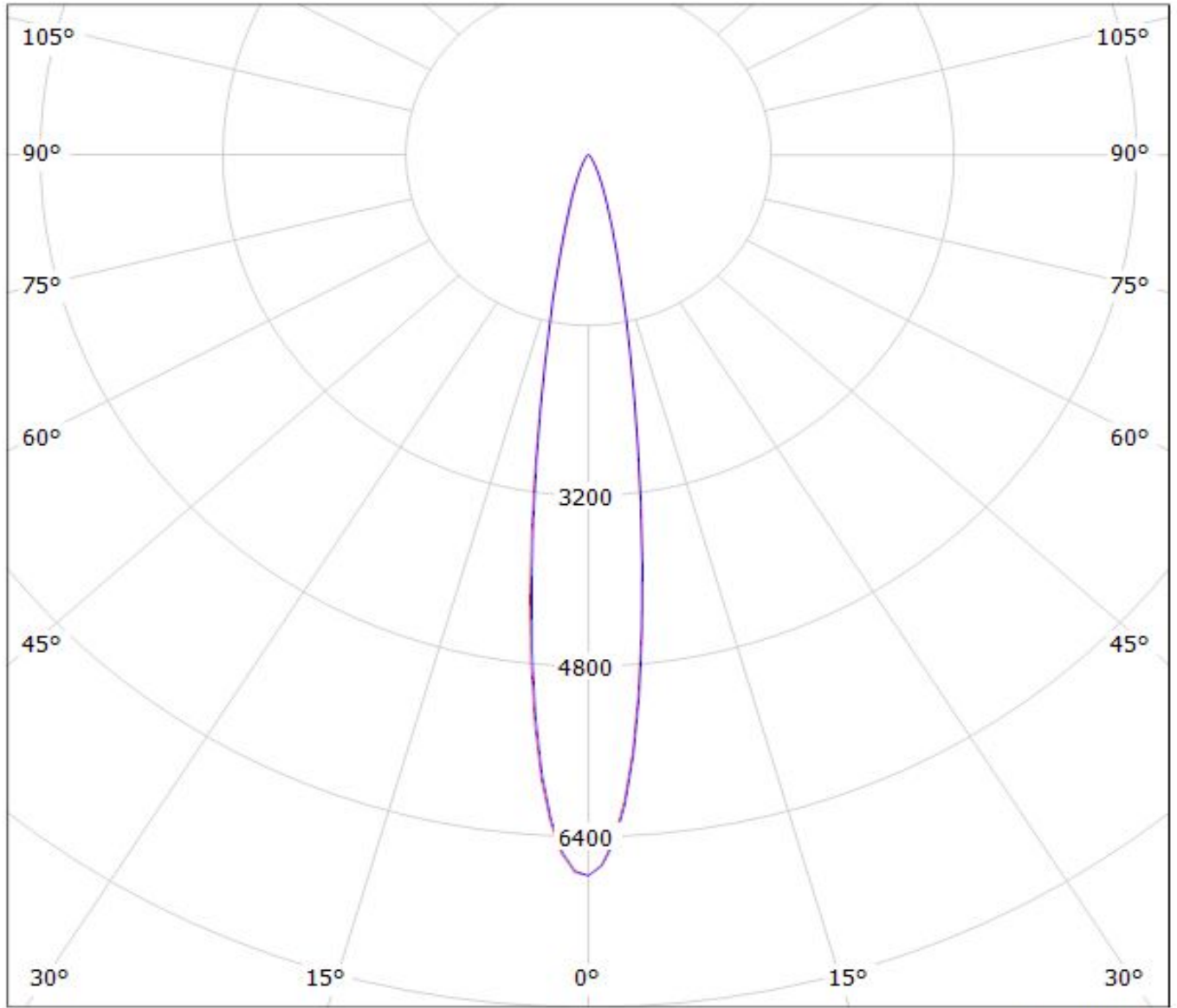


cd/klm

— C0 - C180 — C90 - C270

$\eta = 91\%$

Luminaire: LEDiL Oy C10684\_EVA-D\_(NS9x383) Eff. 89,4%  
Lamps: 1 x Nichia NS9x383 (105lm@250mA)



cd/klm

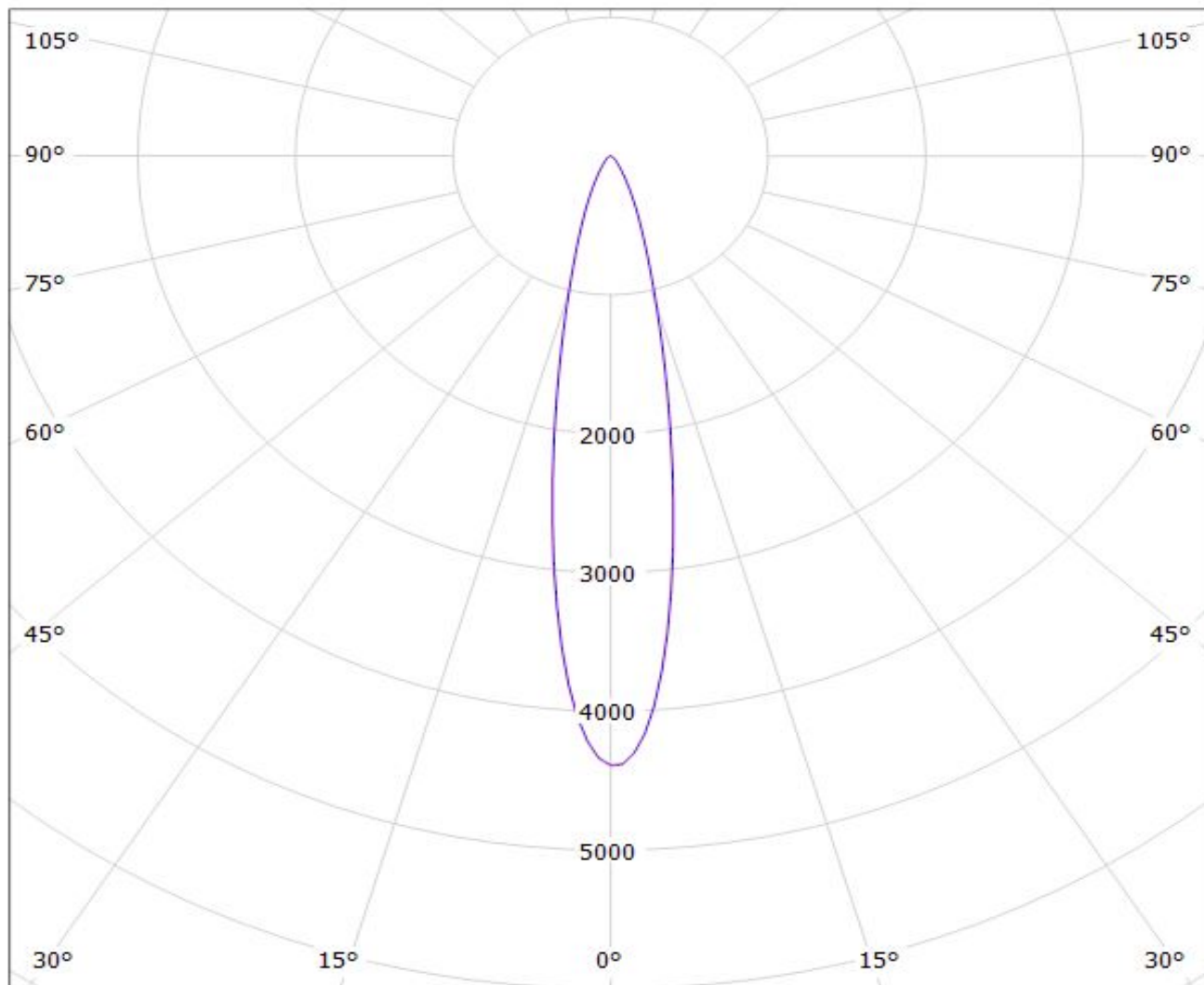
$\eta = 89\%$

— C0 - C180    — C90 - C270



Luminaire: LEDiL Oy C10684\_EVA-D\_(NICHIA\_286) Eff.91%

Lamps: 1 x NICHIA\_286\_(NSML286ME) 322.274lm@100mA CCT=3000K P=3.42532W I=100.1mA



cd/klm

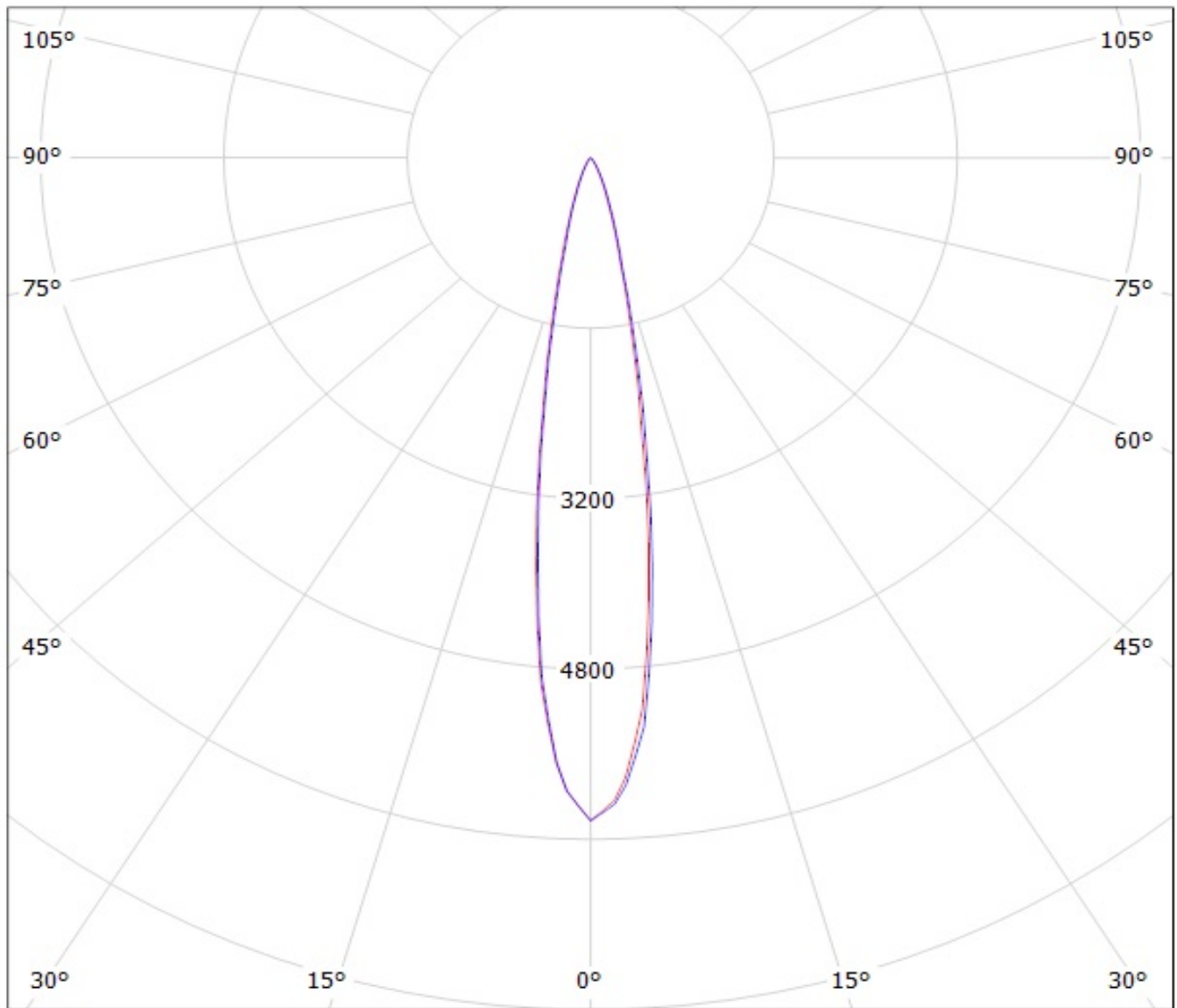
— C0 - C180

— C90 - C270

$\eta = 90\%$

Luminaire: LEDil Oy C10684\_EVA-D\_(DURIS\_S8) Efficiency=84%

Lamps: 1 x Osram DURIS S8 (GW P9LMS1.ĚC) 192lm @ 100mA CCT=2900K P=1.8W I=100mA



cd/klm

— C0 - C180

— C90 - C270

**NOTE: The typical divergence will be changed by different color, chip size and chip position tolerance. The typical total divergence is the full angle measured where the luminous intensity is half of the peak value.**