

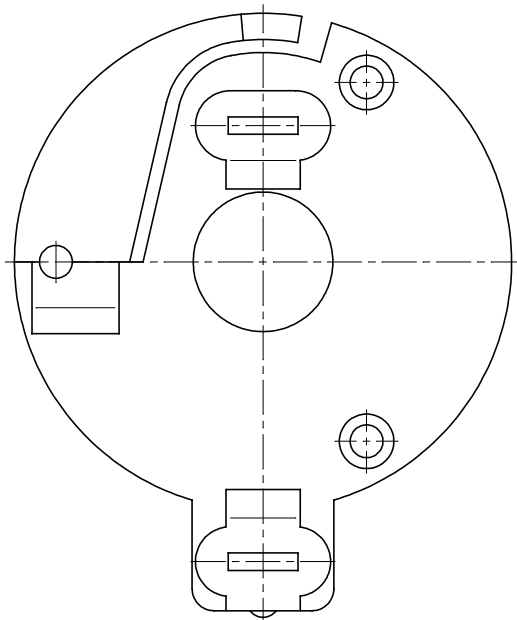
P.C.B. HOLE PATTERN

ELECTRICAL PERFORMANCE :

1. RATING : DC 3V , 120mA.
2. INTER-CONTACT RESISTANCE : 100m OHM MAX.
AT BOTH THE POSITIVE AND NEGATIVE TERMINALS
WHEN MEASURED BETWEEN THE TERMINALS OF THE
CR2032 AT 1KHz WITH LOW DRAINAGE (100mA MAX.)
3. INSULATION RESISTANCE : 100M OHM MIN. WITH DC
500V APPLIED BETWEEN THE POSITIVE AND NEGATIVE
TERMINALS.
4. VOLTAGE DURABILITY : NO DEGRADATION WITH DC
500V APPLIED FOR ONE MINUTE BETWEEN THE POSITIVE
AND NEGATIVE TERMINALS.

MECHANICAL PERFORMANCE :

1. BATTERY INSERTION FORCE : 0.3KG-1.0KG FOR THE
INITIAL CR2032 BATTERY INSERTION.
2. SPRING PRESSURE : 50G MIN. INITIAL CONTACT FORCE
AT POSITIVE AND NEGATIVE TERMINALS.
3. TERMINAL STRENGTH : ELECTRICAL AND MECHANICAL
PERFORMANCE SPECIFICATIONS SHOULD STILL BE
SATISFIED. WITHOUT TERMINAL CRACKING OR
EXCESSIVE PLAY , WITH A STATIC LOAD OF 1KG APPLIED
TO THE TERMINALS IN ANY DIRECTION . HOWEVER , THE
TERMINAL MAY BEND .



Unless other specified, tolerance is ±0.2mm

3.	NEGATIVE CONTACT	1	BRASS	NICKEL PLATED	
2.	POSITIVE CONTACT	1	PHOSPHOR	NICKEL PLATED BRONZE	
1.	HOUSING	1	NYLON		UL94V-0
P/N	PART NAME	Q'TY	MATERIAL	PLATING	REMARKS
REVISION	APPROVAL BY	CHECKED BY	DRAWN BY	UNITS	
			<i>ling</i>	98.05.15	mm
	PROJECTION	PRODUCT	DRAWING NO.	SCALE	
		BATTERY HOLDER	BH-006-PBSR-LF	4/1	
UNITOP ELECTRONICS CO., LTD.					