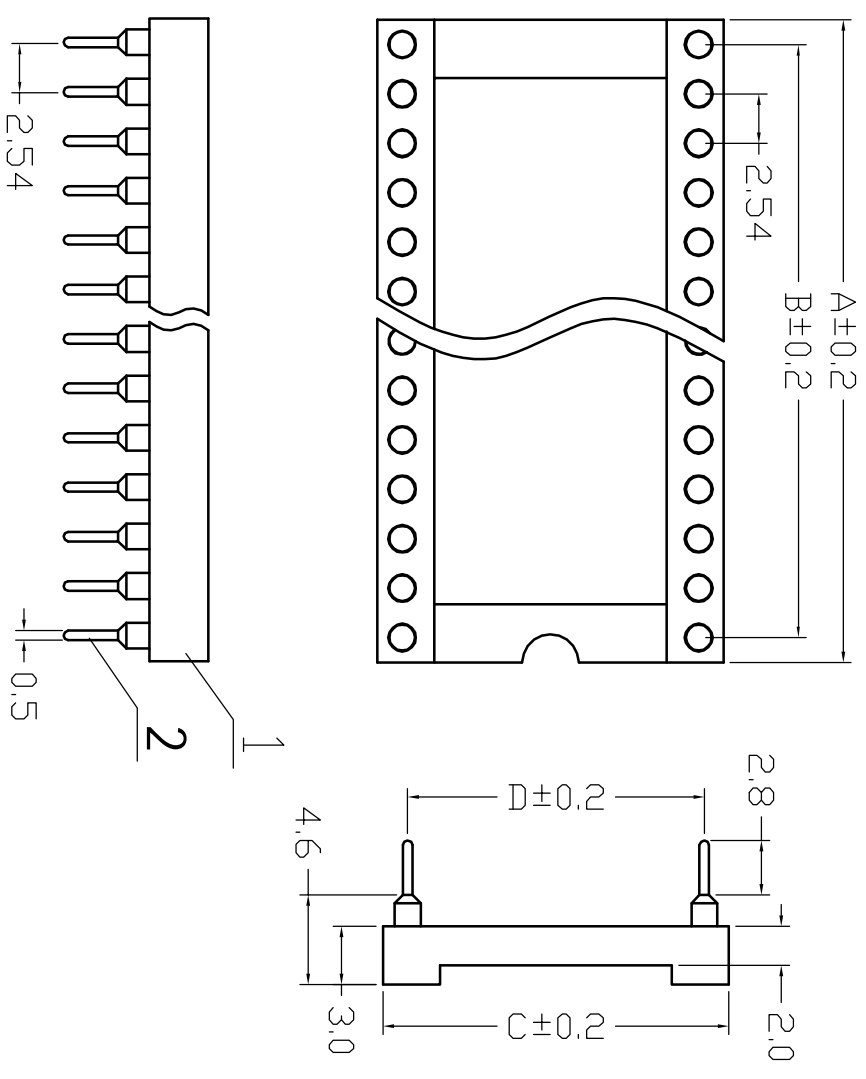


Specifications:
 Contact Resistance: 30mΩ max.at DC 100 mA
 Insulator Resistance: 1000MΩ min.at DC 500V
 Current Rating: 1 AMP
 Dielectric Withstanding
 Voltage: AC 500V For 1 minute
 Operating Temperature: -55 °C--+105°C
 Contact: Phosphor bronze
 Housing: PBT &30% Glass Fiber(UL 94V-0)



Position	Dimension			
	A	B	C	D
6	7.52	7.62	10.16	7.62
8	10.16	7.62	10.16	7.62
14	17.82	15.24	10.16	7.62
16	20.32	17.78	10.16	7.62
18	22.86	20.32	10.16	7.62
20	25.40	22.86	10.16	7.62
24	30.48	27.94	10.16	7.62
24	30.48	27.94	17.78	15.24
28	35.56	33.02	10.16	7.62
28	35.56	33.02	17.78	15.24
40	50.80	48.26	17.78	15.24

- 要求:
1. 塑料件无裂痕。
 2. 整排端子成一直线，相邻端子之间相互平行。

设计/Desigined by	绘图/Drawng by	审核/Checked by	批准/Approved by	未注公差 General Tolerance
				X. ±0.2 X. ±2° .X ±0.1 .X ±1° .XX ±0.05 .XX ±0.5° .XXX ±0.01
图名/Title				文件编号/Title No.
126产品图				
备注/Remark			页序/Sheet	单位/Units: mm
序号/RevNo.	更改记录/Revision note	签名/Signature	日期/Date	