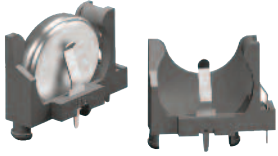


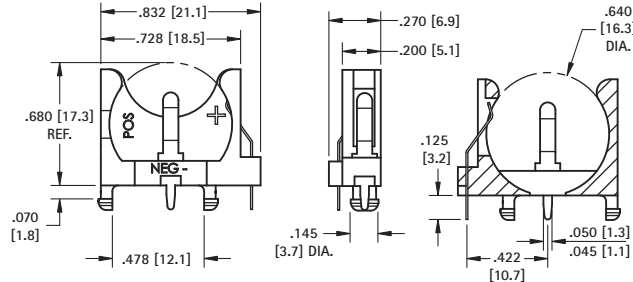
THRU-HOLE MOUNT (THM) VERTICAL VIBRA-FIT CELL HOLDERS

- Accepts all manufactures of 20mm coin cell batteries
- Retains cells securely, withstands shock and vibration
- Polarity clearly marked
- Mounts securely for wave soldering
- Operating Temperature Range: -60°F to 293°F (-51°C to 145°C)

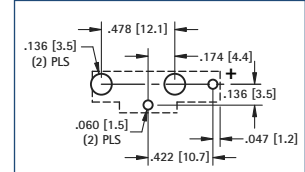
16mm VERTICAL



- Stabilizing pins assure vertical positioning & reduce solder joint stress.
- Polarized holder protects circuit from improper use.



Pad Layout



MATERIAL:

Base: PBT, UL Rated 94V-0

Contacts: .010 (.25) Steel, Tin-Nickel Plate

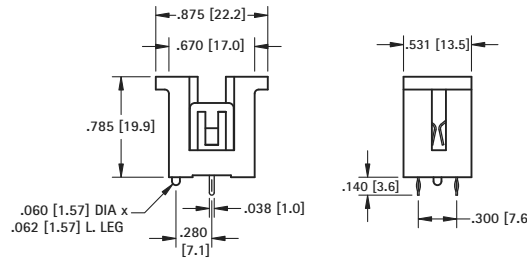
Battery Reference: (1) cell: BR1612, CR1616, CL1620, CR1625, BR1632

CAT. NO. 1069

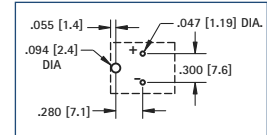
20mm COMPACT



- Molded notch prevents improper insertion of 2032 size cells



Mounting Detail



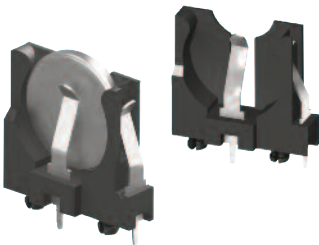
MATERIAL:

Contacts: .012 (.30) Spring Steel, Tin-Nickel Plate

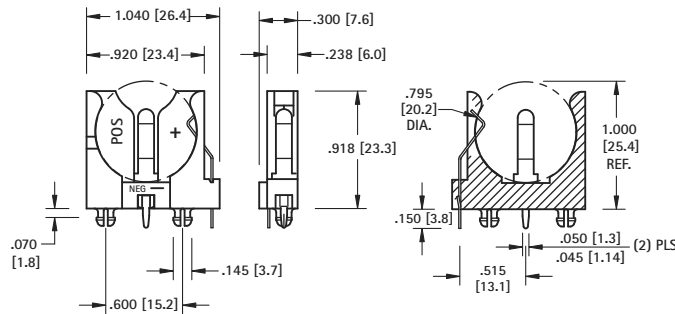
Base: PBT, UL Rated 94V-0

CAT. NO.	BATTERY REFERENCE
1067	CR2016, DL2020, CL2025, CR2032

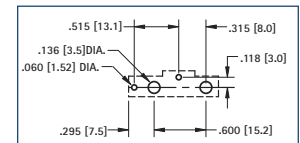
20mm SLIM-LINE



- Polarized holder, protects circuit from improper insertion of cells.



Mounting Detail



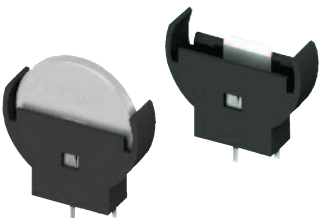
MATERIAL:

Contacts: .016 (.41) Spring Steel, Tin-Nickel Plate

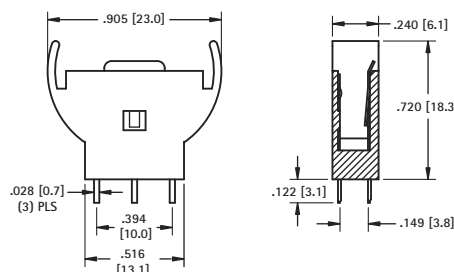
Base: PBT, UL Rated 94V-0

CAT. NO.	BATTERY REFERENCE
1065	BR2012, CR2016, DL2020, CL2025, CR2032

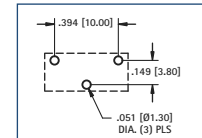
20mm SLIM-LINE



- Top loading.



Mounting Detail



MATERIAL:

Contacts: .010 (.25) Brass, Tin Plate

Base: Nylon 6/6, Black

CAT. NO.	BATTERY REFERENCE
1074	CR2032