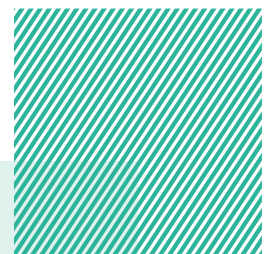
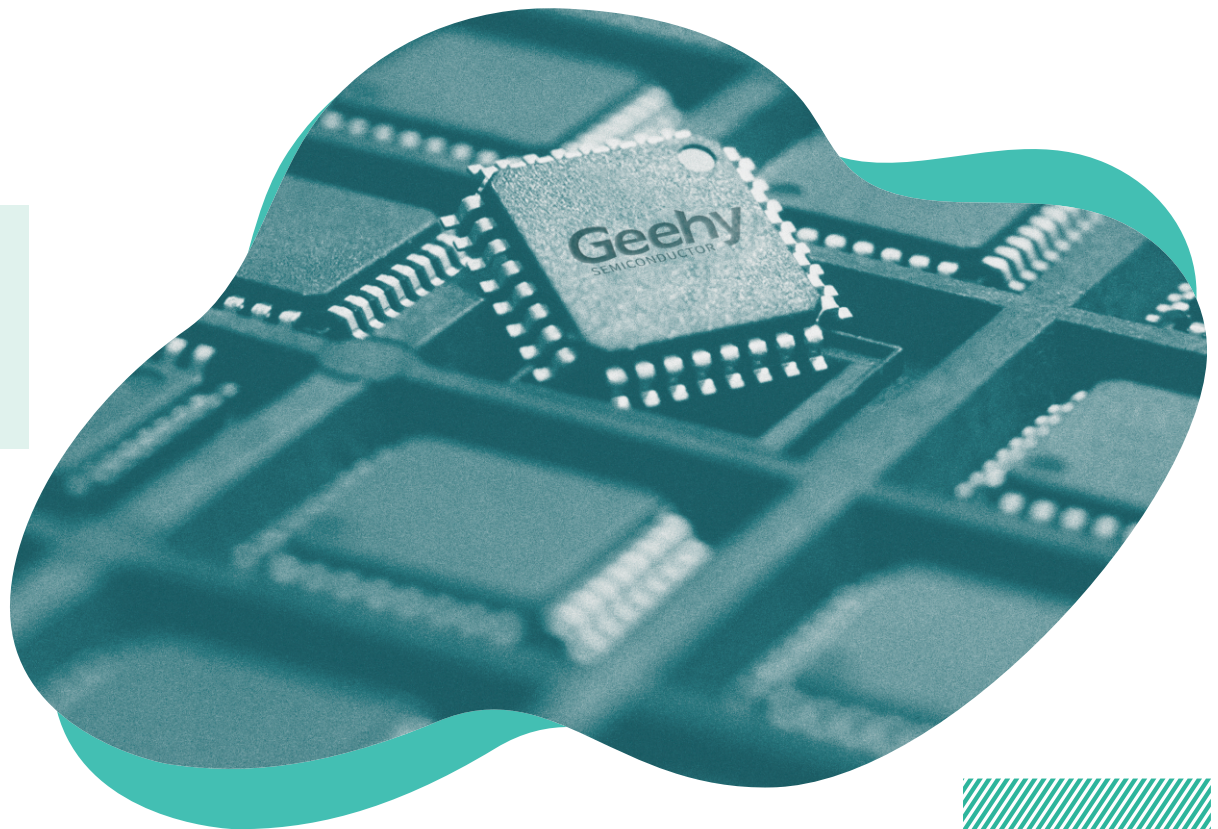
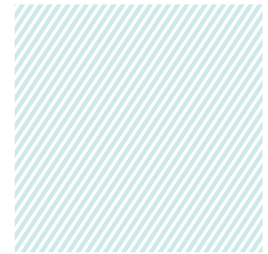


PRODUCT SELECTION GUIDE

32-bit APM32 Industrial&Automotive Grade MCU
GW Series Wireless MCU



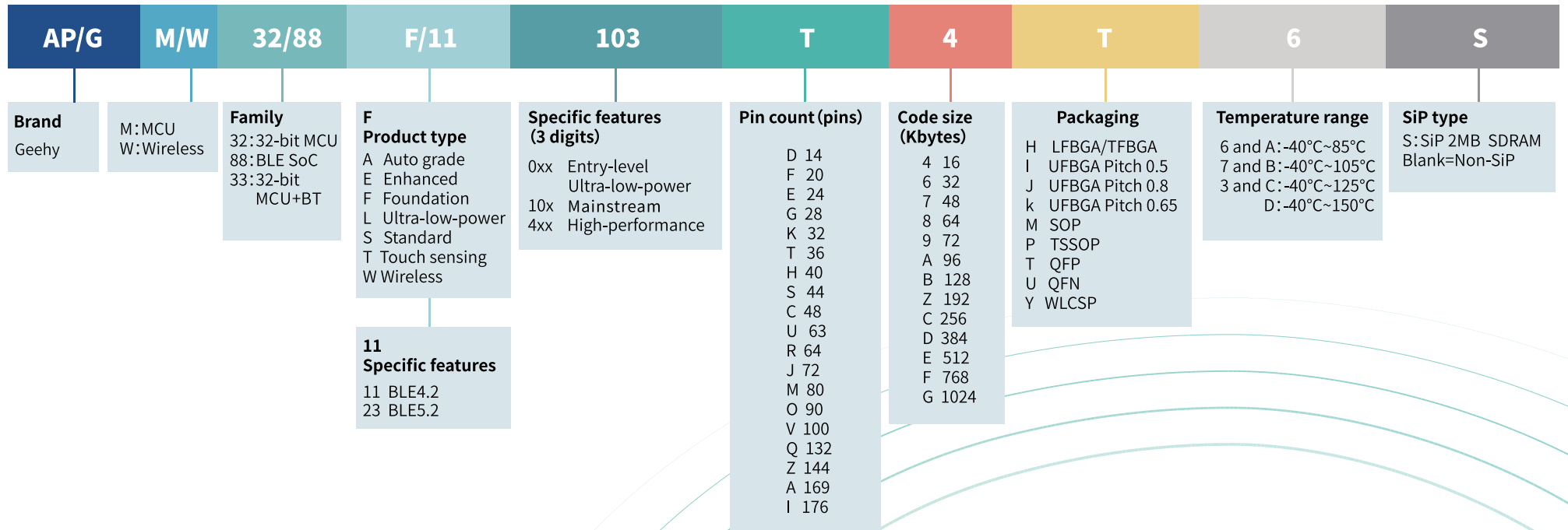
APM32 Series Industrial Grade MCUs – Arm® Cortex®-M0+

Part No.	Frequency(MHz)	FLASH(KB)	SRAM(KB)	SDRAM	FPU	I/Os	Vmin(V)	Vmax(V)	Timer							Analog Interface						Connectivity						Package		
									GPTMR(16bit)	GPTMR(32bit)	Advanced TMR(16bit)	Basic TMR	Systick(24bit)	IWDG	WWDG	RTC	ADC 12-bit cell	ADC 12-bit Channels	DAC 12-bit cell	DAC 12-bit Channels	Analog Comparator	TSC (Channels)	SPI	I2S	I2C	U(S)ART	CAN		SNIO	USB Device
APM32F091CBT6	48	128	32	0	0	38	2	3.6	5	1	1	2	1	1	1	1	10	1	2	2	24	2	2	2	6	1	0	0	1	LQFP48
APM32F091C8U6	48	128	32	0	0	38	2	3.6	5	1	1	2	1	1	1	1	10	1	2	2	24	2	2	2	6	1	0	0	1	QFN48
APM32F091CCT6	48	256	32	0	0	38	2	3.6	5	1	1	2	1	1	1	1	10	1	2	2	24	2	2	2	6	1	0	0	1	LQFP48
APM32F091CCU6	48	256	32	0	0	38	2	3.6	5	1	1	2	1	1	1	1	10	1	2	2	24	2	2	2	6	1	0	0	1	QFN48
APM32F091RBT6	48	128	32	0	0	52	2	3.6	5	1	1	2	1	1	1	1	16	1	2	2	24	2	2	2	8	1	0	0	1	LQFP64
APM32F091RCT6	48	256	32	0	0	52	2	3.6	5	1	1	2	1	1	1	1	16	1	2	2	24	2	2	2	8	1	0	0	1	LQFP64
APM32F091VBT6	48	128	32	0	0	88	2	3.6	5	1	1	2	1	1	1	1	16	1	2	2	24	2	2	2	8	1	0	0	1	LQFP100
APM32F091VCT6	48	256	32	0	0	88	2	3.6	5	1	1	2	1	1	1	1	16	1	2	2	24	2	2	2	8	1	0	0	1	LQFP100
APM32F072VBT6	48	128	16	0	0	87	2	3.6	5	1	1	2	1	1	1	1	16	1	2	2	24	2	2	2	4	1	0	1	1	LQFP100
APM32F072VBT6	48	64	16	0	0	87	2	3.6	5	1	1	2	1	1	1	1	16	1	2	2	24	2	2	2	4	1	0	1	1	LQFP100
APM32F072RBT6	48	128	16	0	0	51	2	3.6	5	1	1	2	1	1	1	1	16	1	2	2	18	2	2	2	4	1	0	1	1	LQFP64
APM32F072RBT6	48	64	16	0	0	51	2	3.6	5	1	1	2	1	1	1	1	16	1	2	2	18	2	2	2	4	1	0	1	1	LQFP64
APM32F072C8U6	48	128	16	0	0	37	2	3.6	5	1	1	2	1	1	1	1	10	1	2	2	17	2	2	2	4	1	0	1	1	LQFP48
APM32F072C8U6	48	64	16	0	0	37	2	3.6	5	1	1	2	1	1	1	1	10	1	2	2	17	2	2	2	4	1	0	1	1	QFN48
APM32F072C8U6	48	64	16	0	0	37	2	3.6	5	1	1	2	1	1	1	1	10	1	2	2	17	2	2	2	4	1	0	1	1	QFN48
APM32F072C8U6	48	128	16	0	0	37	2	3.6	5	1	1	2	1	1	1	1	10	1	2	2	17	2	2	2	4	1	0	1	1	LQFP48
APM32F072C8U6	48	128	16	0	0	37	2	3.6	5	1	1	2	1	1	1	1	10	1	2	2	17	2	2	2	4	1	0	1	1	LQFP48
APM32F071V8T6	48	64	16	0	0	87	2	3.6	5	1	1	2	1	1	1	1	16	1	2	2	24	2	2	2	4	0	0	0	1	LQFP100
APM32F071C8U6	48	128	16	0	0	37	2	3.6	5	1	1	2	1	1	1	1	10	1	2	2	17	2	2	2	4	0	0	0	1	QFN48
APM32F071C8U6	48	128	16	0	0	37	2	3.6	5	1	1	2	1	1	1	1	10	1	2	2	17	2	2	2	4	0	0	0	1	LQFP48
APM32F070RBT6	48	128	16	0	0	51	2.4	3.6	5	0	1	2	1	1	1	1	16	0	0	0	0	2	0	2	4	0	0	1	0	LQFP64
APM32F070C8T6	48	128	16	0	0	37	2.4	3.6	5	0	1	2	1	1	1	1	10	0	0	0	0	2	0	2	4	0	0	1	0	LQFP48
APM32F051K6T6	48	32	8	0	0	25	2	3.6	5	1	1	1	1	1	1	1	10	1	1	2	18	1	1	1	2	0	0	0	1	LQFP32
APM32F051K6U6	48	32	8	0	0	27	2	3.6	5	1	1	1	1	1	1	1	10	1	1	2	18	1	1	1	2	0	0	0	1	QFN32
APM32F051K8T6	48	64	8	0	0	25	2	3.6	5	1	1	1	1	1	1	1	10	1	1	2	18	1	1	1	2	0	0	0	1	LQFP32
APM32F051K8U6	48	64	8	0	0	27	2	3.6	5	1	1	1	1	1	1	1	10	1	1	2	18	1	1	1	2	0	0	0	1	QFN32
APM32F051C6T6	48	32	8	0	0	39	2	3.6	5	1	1	1	1	1	1	1	10	1	1	2	18	1	1	1	2	0	0	0	1	LQFP48
APM32F051C6U6	48	32	8	0	0	39	2	3.6	5	1	1	1	1	1	1	1	10	1	1	2	18	1	1	1	2	0	0	0	1	QFN48
APM32F051C8T6	48	64	8	0	0	39	2	3.6	5	1	1	1	1	1	1	1	10	1	1	2	18	2	1	2	2	0	0	0	1	LQFP48
APM32F051C8U6	48	64	8	0	0	39	2	3.6	5	1	1	1	1	1	1	1	10	1	1	2	18	2	1	2	2	0	0	0	1	QFN48
APM32F051R6T6	48	32	8	0	0	55	2	3.6	5	1	1	1	1	1	1	1	16	1	1	2	18	2	1	2	2	0	0	0	1	LQFP64
APM32F051R8T6	48	64	8	0	0	55	2	3.6	5	1	1	1	1	1	1	1	16	1	1	2	18	2	1	2	2	0	0	0	1	LQFP64
APM32F030F6P6	48	32	4	0	0	16	2	3.6	4	0	1	0	1	1	1	1	8	0	0	0	0	1	0	1	1	0	0	0	0	TSSOP20
APM32F030K6T6	48	32	4	0	0	26	2	3.6	4	0	1	0	1	1	1	1	10	0	0	0	0	1	0	1	1	0	0	0	0	LQFP32
APM32F030K6T7	48	32	4	0	0	26	2	3.6	4	0	1	0	1	1	1	1	10	0	0	0	0	1	0	1	1	0	0	0	0	LQFP32
APM32F030K6U6	48	32	4	0	0	26	2	3.6	4	0	1	0	1	1	1	1	10	0	0	0	0	1	0	1	1	0	0	0	0	QFN32
APM32F030K8T6	48	64	8	0	0	26	2	3.6	4	0	1	0	1	1	1	1	10	0	0	0	0	1	0	1	1	0	0	0	0	LQFP32
APM32F030C6T6	48	32	4	0	0	39	2	3.6	4	0	1	0	1	1	1	1	10	0	0	0	0	1	0	1	1	0	0	0	0	LQFP48
APM32F030C8T6	48	64	8	0	0	39	2	3.6	5	0	1	1	1	1	1	1	10	0	0	0	0	2	0	2	2	0	0	0	0	LQFP48
APM32F030R8T6	48	64	8	0	0	55	2	3.6	5	0	1	1	1	1	1	1	16	0	0	0	0	2	0	2	2	0	0	0	0	LQFP64
APM32F030CCT6	48	256	32	0	0	37	2	3.6	5	0	1	2	1	1	1	1	10	0	0	0	0	2	0	2	6	0	0	0	0	LQFP48
APM32F030RCT6	48	256	32	0	0	51	2	3.6	5	0	1	2	1	1	1	1	16	0	0	0	0	2	0	2	6	0	0	0	0	LQFP64
APM32F003F4P6	48	16	2	0	0	16	2	5.5	1	0	2	1	1	1	0	1	8	0	0	0	0	1	0	1	3	0	0	0	0	TSSOP20
APM32F003F6P6	48	32	4	0	0	16	2	5.5	1	0	2	1	1	1	0	1	8	0	0	0	0	1	0	1	3	0	0	0	0	TSSOP20
APM32F003F4U6	48	16	2	0	0	16	2	5.5	1	0	2	1	1	1	0	1	8	0	0	0	0	1	0	1	3	0	0	0	0	QFN20
APM32F003F6U6	48	32	4	0	0	16	2	5.5	1	0	2	1	1	1	0	1	8	0	0	0	0	1	0	1	3	0	0	0	0	QFN20
APM32F003F4M6	48	16	2	0	0	16	2	5.5	1	0	2	1	1	1	0	1	8	0	0	0	0	1	0	1	3	0	0	0	0	SOP20
APM32F003F6M6	48	32	4	0	0	16	2	5.5	1	0	2	1	1	1	0	1	8	0	0	0	0	1	0	1	3	0	0	0	0	SOP20
APM32F003F6P7	48	32	4	0	0	16	2	5.5	1	0	2	1	1	1	0	1	8	0	0	0	0	1	0	1	3	0	0	0	0	TSSOP20
APM32F003F6U7	48	32	4	0	0	16	2	5.5	1	0	2	1	1	1	0	1	8	0	0	0	0	1	0	1	3	0	0	0	0	QFN20

APM32 Series Industrial Grade MCUs – Arm® Cortex®-M3

Part No.	Frequency(MHz)	FLASH(KB)	SRAM(KB)	SDRAM	FPU	I/Os	Vmin(V)	Vmax(V)	Timer							Analog Interface						Connectivity							Package						
									GPIO(R16bit)	GPIO(R20bit)	Advanced TMR(16bit)	Basic TMR	System(24bit)	IWDG	WWDG	RTC	ADC12-bit Cell	ADC12-bit Channels	DAC12-bit Cell	DAC12-bit Channels	Analog Comparator	EMMC	SPI	I2S	I2C	USART	CAN	SDIO		USB Device	CEC	USB OTG_FS	Ethernet		
APM32E103CCU6	120	256	64	0	1	37	2	3.6	4	0	1	2	1	1	1	1	2	10	2	2	0	0	3	2	2	3	2	0	1	0	0	0	0	QFN48	
APM32E103CEU6	120	512	128	0	1	37	2	3.6	4	0	1	2	1	1	1	1	2	10	2	2	0	0	3	2	2	3	2	0	1	0	0	0	0	QFN48	
APM32E103CCT6	120	256	64	0	1	37	2	3.6	4	0	1	2	1	1	1	1	2	10	2	2	0	0	3	2	2	3	2	0	1	0	0	0	0	LQFP48	
APM32E103CET6	120	512	128	0	1	37	2	3.6	4	0	1	2	1	1	1	1	2	10	2	2	0	0	3	2	2	3	2	0	1	0	0	0	0	LQFP48	
APM32E103RCT6	120	256	64	0	1	51	2	3.6	4	0	2	2	1	1	1	1	3	16	2	2	0	0	3	2	2	3+2	2	1	1	0	0	0	0	LQFP64	
APM32E103RET6	120	512	128	0	1	51	2	3.6	4	0	2	2	1	1	1	1	3	16	2	2	0	0	3	2	2	3+2	2	1	1	0	0	0	0	LQFP64	
APM32E103VCT6	120	256	64	0	1	80	2	3.6	4	0	2	2	1	1	1	1	3	16	2	2	0	1	3	2	2	3+2	2	1	1	0	0	0	0	LQFP100	
APM32E103VET6	120	512	128	0	1	80	2	3.6	4	0	2	2	1	1	1	1	3	16	2	2	0	1	3	2	2	3+2	2	1	1	0	0	0	0	LQFP100	
APM32E103ZCT6	120	256	64	1	1	112	2	3.6	4	0	2	2	1	1	1	1	3	21	2	2	0	1	3	2	2	3+2	2	1	1	0	0	0	0	LQFP144	
APM32E103ZET6	120	512	128	1	1	112	2	3.6	4	0	2	2	1	1	1	1	3	21	2	2	0	1	3	2	2	3+2	2	1	1	0	0	0	0	LQFP144	
APM32S103TBU6	96	128	36	0	1	26	2	3.6	3	0	1	0	1	1	1	1	2	10	0	0	0	0	1	0	1	2	2	0	1	0	0	0	0	QFN36	
APM32S103CBT6	96	64	36	0	1	37	2	3.6	3	0	1	0	1	1	1	1	2	10	0	0	0	0	2	0	2	3	2	0	1	0	0	0	0	LQFP48	
APM32S103CBT6	96	128	36	0	1	37	2	3.6	3	0	1	0	1	1	1	1	2	10	0	0	0	0	2	0	2	3	2	0	1	0	0	0	0	LQFP48	
APM32S103RBT6	96	128	36	0	1	51	2	3.6	3	0	1	0	1	1	1	1	2	16	0	0	0	0	2	0	2	3	2	0	1	0	0	0	0	LQFP64	
APM32S103VBT6	96	128	36	0	1	80	2	3.6	3	0	1	0	1	1	1	1	2	16	0	0	0	0	2	0	2	3	2	0	1	0	0	0	0	LQFP100	
APM32F103T4U6	96	16	6	0	1	26	2	3.6	2	0	1	0	1	1	1	1	2	10	0	0	0	0	1	0	1	2	1	0	1	0	0	0	0	QFN36	
APM32F103T6U6	96	32	10	0	1	26	2	3.6	2	0	1	0	1	1	1	1	2	10	0	0	0	0	1	0	1	2	1	0	1	0	0	0	0	QFN36	
APM32F103T8U6	96	64	20	0	1	26	2	3.6	3	0	1	0	1	1	1	1	2	10	0	0	0	0	1	0	1	2	1	0	1	0	0	0	0	QFN36	
APM32F103TBU6	96	128	20	0	1	26	2	3.6	3	0	1	0	1	1	1	1	2	10	0	0	0	0	1	0	1	2	1	0	1	0	0	0	0	QFN36	
APM32F103TBU7	96	128	20	0	1	26	2	3.6	3	0	1	0	1	1	1	1	2	10	0	0	0	0	1	0	1	2	1	0	1	0	0	0	0	QFN36	
APM32F103C4T6	96	16	6	0	1	37	2	3.6	2	0	1	0	1	1	1	1	2	10	0	0	0	0	1	0	1	2	1	0	1	0	0	0	0	LQFP48	
APM32F103C6T6	96	32	10	0	1	37	2	3.6	2	0	1	0	1	1	1	1	2	10	0	0	0	0	1	0	1	2	1	0	1	0	0	0	0	LQFP48	
APM32F103CBT6	96	64	20	0	1	37	2	3.6	3	0	1	0	1	1	1	1	2	10	0	0	0	0	2	0	2	3	1	0	1	0	0	0	0	LQFP48	
APM32F103CBT6	96	128	20	0	1	37	2	3.6	3	0	1	0	1	1	1	1	2	10	0	0	0	0	2	0	2	3	1	0	1	0	0	0	0	LQFP48	
APM32F103CBT7	96	128	20	0	1	37	2	3.6	3	0	1	0	1	1	1	1	2	10	0	0	0	0	2	0	2	3	1	0	1	0	0	0	0	LQFP48	
APM32F103R4T6	96	16	6	0	1	51	2	3.6	2	0	1	0	1	1	1	1	2	16	0	0	0	0	1	0	1	2	1	0	1	0	0	0	0	LQFP64	
APM32F103R6T6	96	32	10	0	1	51	2	3.6	2	0	1	0	1	1	1	1	2	16	0	0	0	0	1	0	1	2	1	0	1	0	0	0	0	LQFP64	
APM32F103R8T6	96	64	20	0	1	51	2	3.6	3	0	1	0	1	1	1	1	2	16	0	0	0	0	2	0	2	3	1	0	1	0	0	0	0	LQFP64	
APM32F103RBT6	96	128	20	0	1	51	2	3.6	3	0	1	0	1	1	1	1	2	16	0	0	0	0	2	0	2	3	1	0	1	0	0	0	0	LQFP64	
APM32F103RBT7	96	128	20	0	1	51	2	3.6	3	0	1	0	1	1	1	1	2	16	0	0	0	0	2	0	2	3	1	0	1	0	0	0	0	LQFP64	
APM32F103V8T6	96	64	20	0	1	80	2	3.6	3	0	1	0	1	1	1	1	2	16	0	0	0	0	2	0	2	3	1	0	1	0	0	0	0	LQFP100	
APM32F103VBT6	96	128	20	0	1	80	2	3.6	3	0	1	0	1	1	1	1	2	16	0	0	0	0	2	0	2	3	1	0	1	0	0	0	0	LQFP100	
APM32F103CCT6	96	256	64	0	0	37	2	3.6	4	0	1	1	1	1	1	1	2	10	2	2	0	0	3	2	2	3	2	0	1	0	0	0	0	0	LQFP48
APM32F103RCT6	96	256	64	0	0	51	2	3.6	4	0	2	2	1	1	1	1	3	16	2	2	0	0	3	2	2	3+2	2	1	1	0	0	0	0	LQFP64	
APM32F103VCT6	96	256	64	0	0	80	2	3.6	4	0	2	2	1	1	1	1	3	16	2	2	0	1	3	2	2	3+2	2	1	1	0	0	0	0	LQFP100	
APM32F103RDT6	96	384	64	0	1	51	2	3.6	4	0	2	2	1	1	1	1	3	16	2	2	0	0	3	2	2	3+2	1	1	1	0	0	0	0	LQFP64	
APM32F103RET6	96	512	128	0	1	51	2	3.6	4	0	2	2	1	1	1	1	3	16	2	2	0	0	3	2	2	3+2	1	1	1	0	0	0	0	LQFP64	
APM32F103VDT6	96	384	64	0	1	80	2	3.6	4	0	2	2	1	1	1	1	3	16	2	2	0	1	3	2	2	3+2	1	1	1	0	0	0	0	LQFP100	
APM32F103VET6	96	512	128	0	1	80	2	3.6	4	0	2	2	1	1	1	1	3	16	2	2	0	1	3	2	2	3+2	1	1	1	0	0	0	0	LQFP100	
APM32F103VET7	96	512	128	0	1	80	2	3.6	4	0	2	2	1	1	1	1	3	16	2	2	0	1	3	2	2	3+2	1	1	1	0	0	0	0	LQFP100	
APM32F103ZDT6	96	384	64	1	1	112	2	3.6	4	0	2	2	1	1	1	1	3	21	2	2	0	1	3	2	2	3+2	1	1	1	0	0	0	0	LQFP144	
APM32F103ZET6	96	512	128	1	1	112	2	3.6	4	0	2	2	1	1	1	1	3	21	2	2	0	1	3	2	2	3+2	1	1	1	0	0	0	0	LQFP144	
APM32F105R8T6	96	64	64	0	0	51	2	3.6	4	0	1	2	1	1	1	1	2	16	2	2	0	0	3	2	2	3+2	2	0	0	0	1	0	0	LQFP64	
APM32F105RBT6	96	128	64	0	0	51	2	3.6	4	0	1	2	1	1	1	1	2	16	2	2	0	0	3	2	2	3+2	2	0	0	0	0	1	0	LQFP64	
APM32F105RCT6	96	256	64	0	0	51	2	3.6	4	0	1	2	1	1	1	1	2	16	2	2	0	0	3	2	2	3+2	2	0	0	0	1	0	0	LQFP64	
APM32F105V8T6	96	64	64	0	0	80	2	3.6	4	0	1	2	1	1	1	1	2	16	2	2	0	0	3	2	2	3+2	2	0	0	0	1	0	0	LQFP100	
APM32F105VBT6	96	128	64	0	0	80	2	3.6	4	0	1	2	1	1	1	1	2	16	2	2	0	0	3	2	2	3+2	2	0	0	0	1	0	0	LQFP100	
APM32F105VCT6	96	256	64	0	0	80	2	3.6	4	0	1	2	1	1	1	1	2	16	2	2	0	0	3	2	2	3+2	2	0	0	0	1	0	0	LQFP100	
APM32F107RBT6	96	128	64	0	0	51	2	3.6	4	0	1	2	1	1	1	1	2	16	2	2	0	0	3	2	1	3+2	2	0	0	0	1	1	1	LQFP64	
APM32F107RCT6	96	256	64	0	0	51	2	3.6	4	0	1	2	1	1	1	1	2	16	2	2	0	0	3	2	1	3+2	2	0	0	0	1	1	1	LQFP64	
APM32F107VBT6	96																																		

Product Selection Guide



TECHNOLOGY INSPIRED.

GEEHY SEMICONDUCTOR

🌐 www.geehy.com ✉ contact@geehy.com ☎ +1-919-561-5353

Copyright© Geehy Semiconductor - Oct.2022. The information contained herein is subject to change without notice. Geehy shall not be liable for technical or editorial errors or omissions contained herein. Photographed products may not always match the description. All brand names & trademarks are the properties of their respective holders and used for descriptive purposes only.